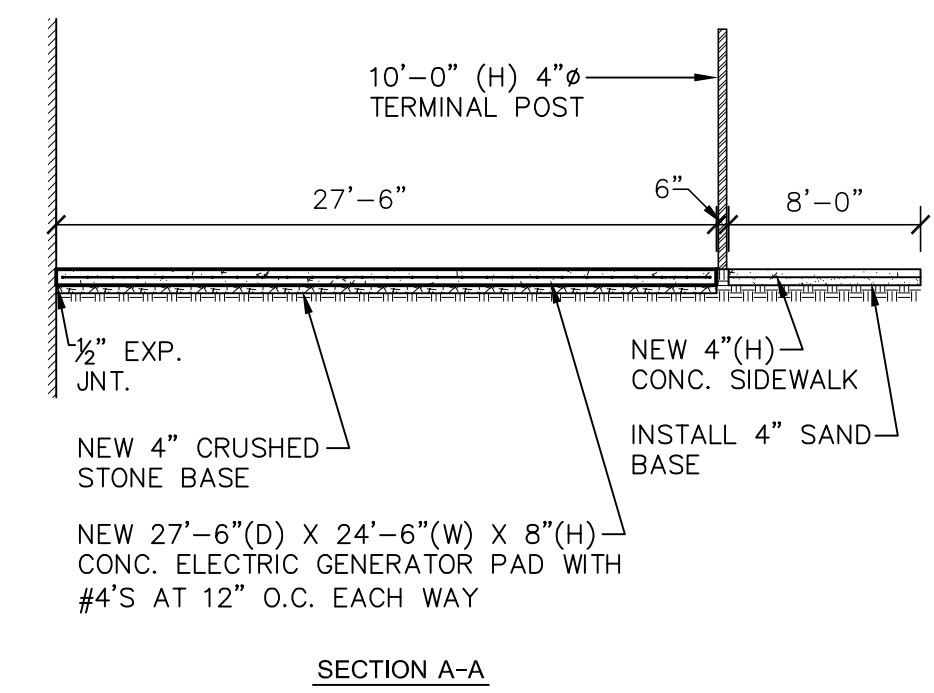
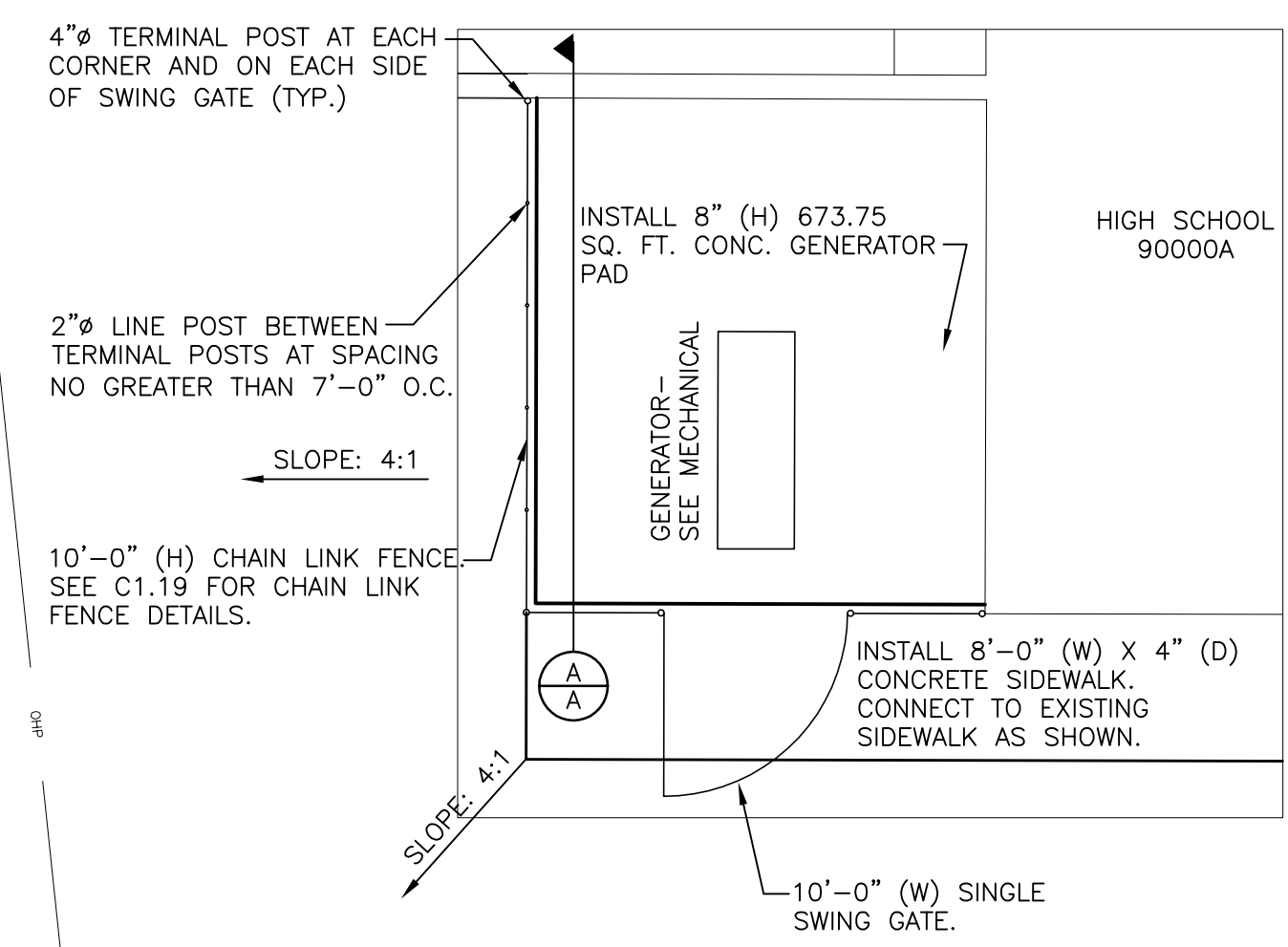
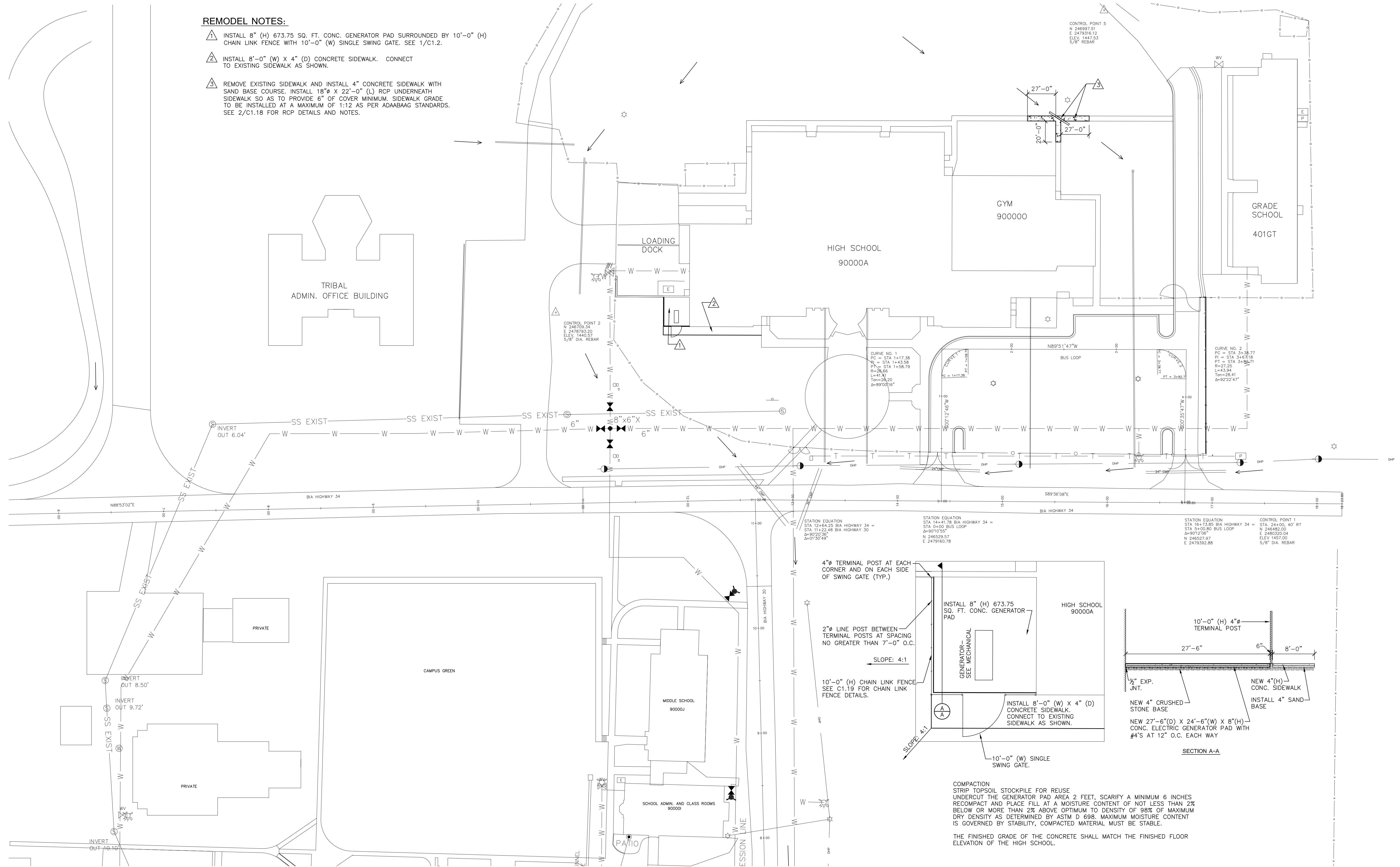


REMODEL NOTES:

- 1 INSTALL 8" (H) 673.75 SQ. FT. CONC. GENERATOR PAD SURROUNDED BY 10'-0" (H) CHAIN LINK FENCE WITH 10'-0" (W) SINGLE SWING GATE. SEE 1/C1.2.
- 2 INSTALL 8'-0" (W) X 4" (D) CONCRETE SIDEWALK. CONNECT TO EXISTING SIDEWALK AS SHOWN.
- 3 REMOVE EXISTING SIDEWALK AND INSTALL 4" CONCRETE SIDEWALK WITH SAND BASE COURSE. INSTALL 18"Ø X 22'-0" (L) RCP UNDERNEATH SIDEWALK SO AS TO PROVIDE 6" OF COVER MINIMUM. SIDEWALK GRADE TO BE INSTALLED AT A MAXIMUM OF 1:12 AS PER ADA/ABAAG STANDARDS. SEE 2/C1.18 FOR RCP DETAILS AND NOTES.

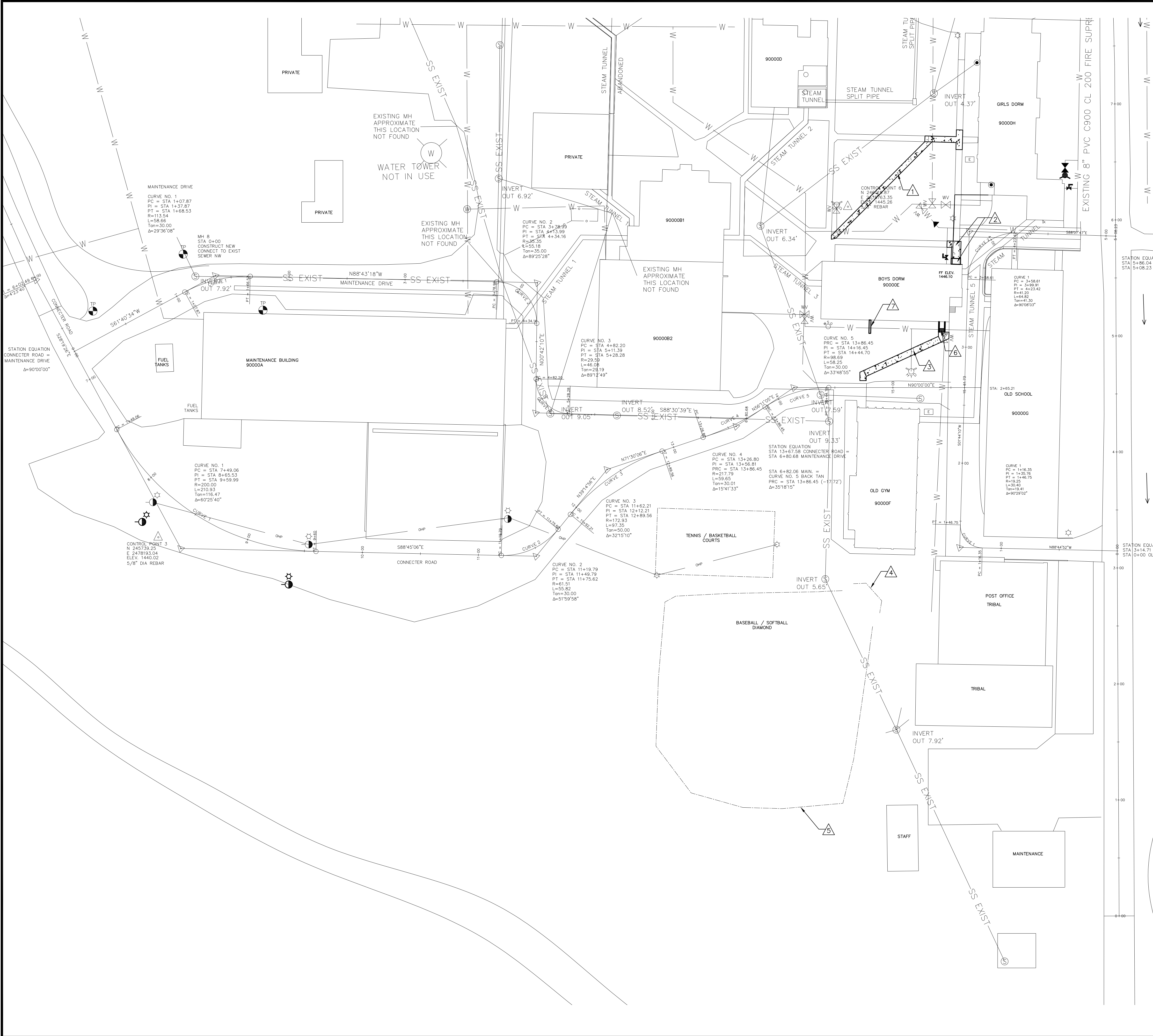


COMPACTION STRIP TOPSOIL STOCKPILE FOR REUSE UNDERCUT THE GENERATOR PAD AREA 2 FEET. SCARIFY A MINIMUM 6 INCHES RECOMPACT AND PLACE FILL AT A MOISTURE CONTENT OF NOT LESS THAN 2% BELOW OR MORE THAN 2% ABOVE OPTIMUM TO DENSITY OF 98% OF MAXIMUM DRY DENSITY AS DETERMINED BY ASTM D 698. MAXIMUM MOISTURE CONTENT IS GOVERNED BY STABILITY, COMPACTED MATERIAL MUST BE STABLE.

THE FINISHED GRADE OF THE CONCRETE SHALL MATCH THE FINISHED FLOOR ELEVATION OF THE HIGH SCHOOL.

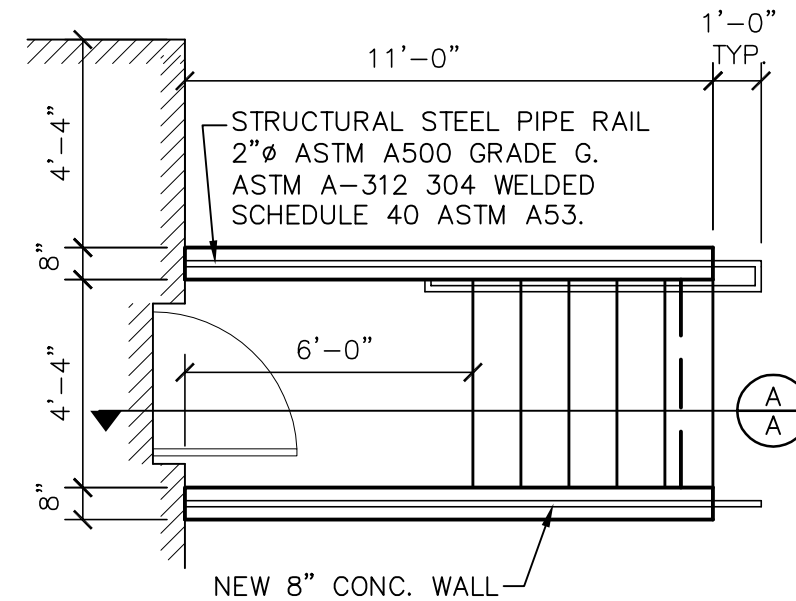
1 CONC. GENERATOR PAD
C2.1 N.T.S.



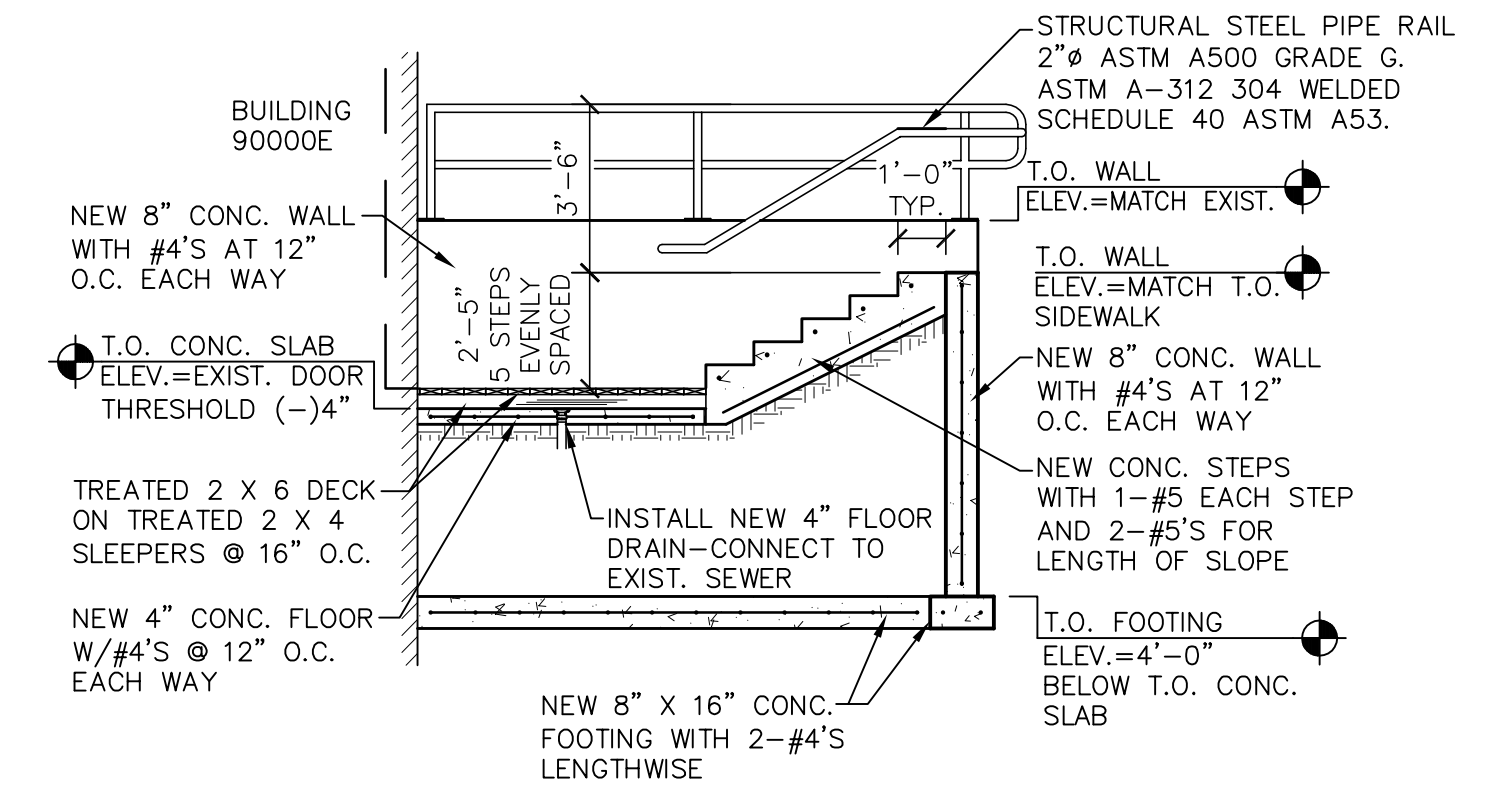


REMODEL NOTES:

- 1 REPLACE CONCRETE SIDEWALK NORTH OF BUILDING 90000E.
- 2 REPLACE EXIST. CONCRETE STOOP ON NORTH SIDE OF BUILDING 90000E WITH 8" (D) X 6'-0" (D) X 8'-0" (W) MONO. CONC. STOOP WITH STEPS. REPLACE EXIST. SIDEWALK WITH 12'-0" OF NEW SIDEWALK SLOPED TO EXIST. SIDEWALK. SEE 2/C2.2.
- 3 REPLACE CONCRETE SIDEWALK SOUTH OF BUILDING 90000E.
- 4 REPLACE BACKSTOP AND PLAYING FIELD SEE SHEET C2.3.
- 5 REPLACE CHAIN LINK FENCING UP TO 42" HIGH. SEE 1/C2.3 AND 1/C1.19.
- 6 INSTALL NEW CONCRETE STAIRWELL TO REPLACE EXISTING CONCRETE STAIRWELL. SEE 1/C2.2.
- 7 INSTALL NEW CONCRETE SPLASHBLOCK TO MATCH SIZE AND TYPE OF EXISTING.

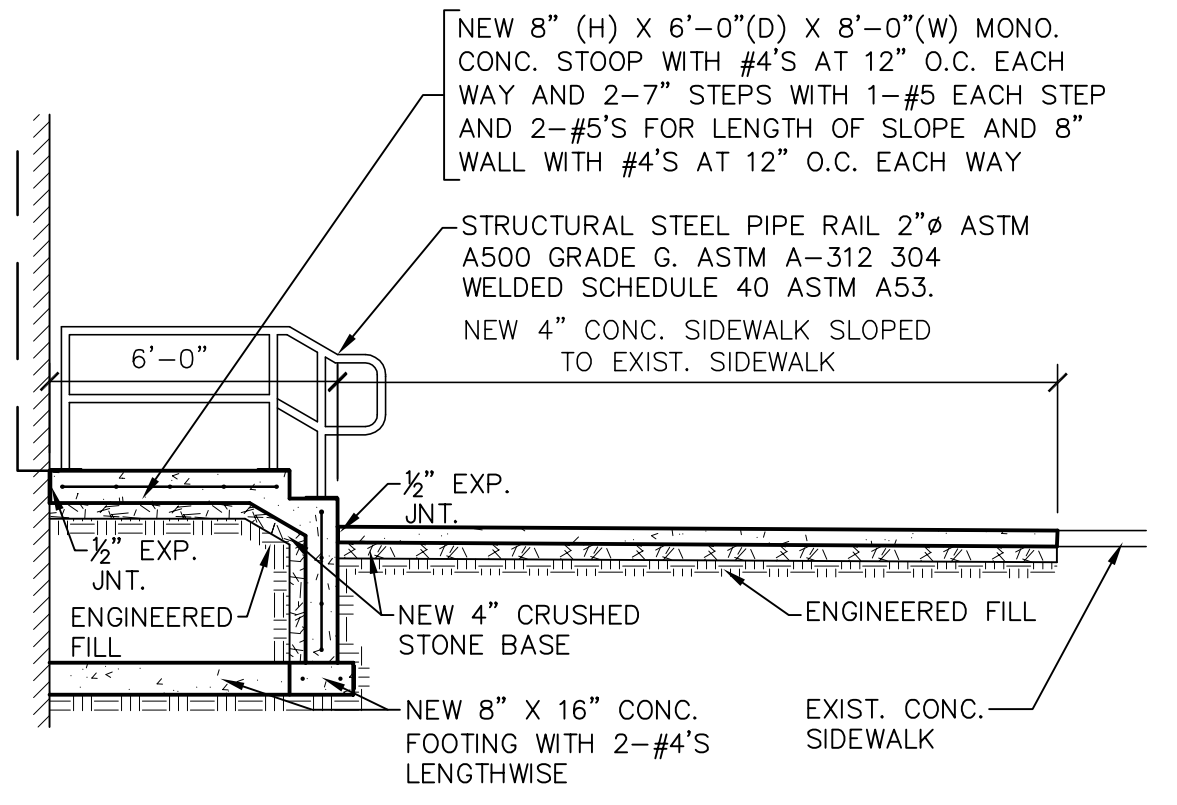


PAINT FOR STEEL PIPE HANDRAIL NOTE:
 1. SHOP APPLIED 3 COAT PAINT SYSTEM CONSISTING OF ORGANIC ZINC PRIMER AT 3.0 TO 5.0 MIL. EPOXY INTERMEDIATE COAT 5.0 TO 7.0 MIL. URETHANE FINISH COAT 2.0 TO 4.0 MIL.



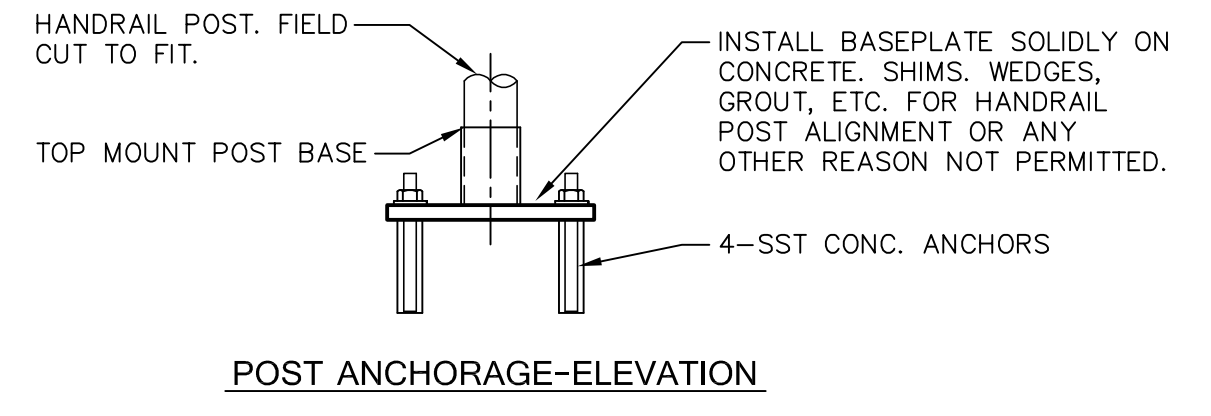
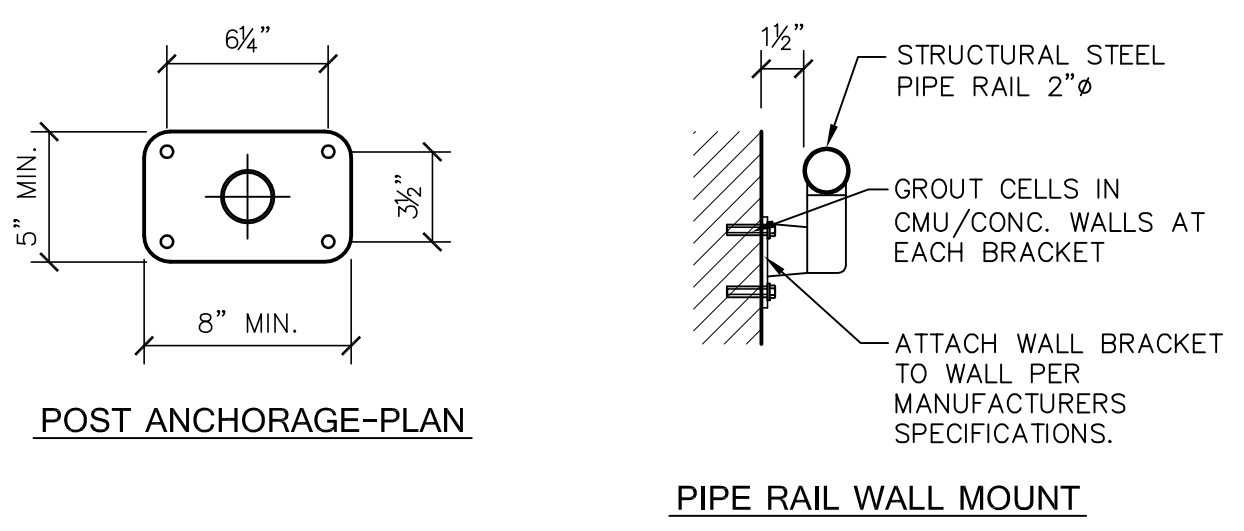
1 NEW STAIRWELL INSTALL.

N.T.S.



2 NEW STOOP/H.C. RAMP

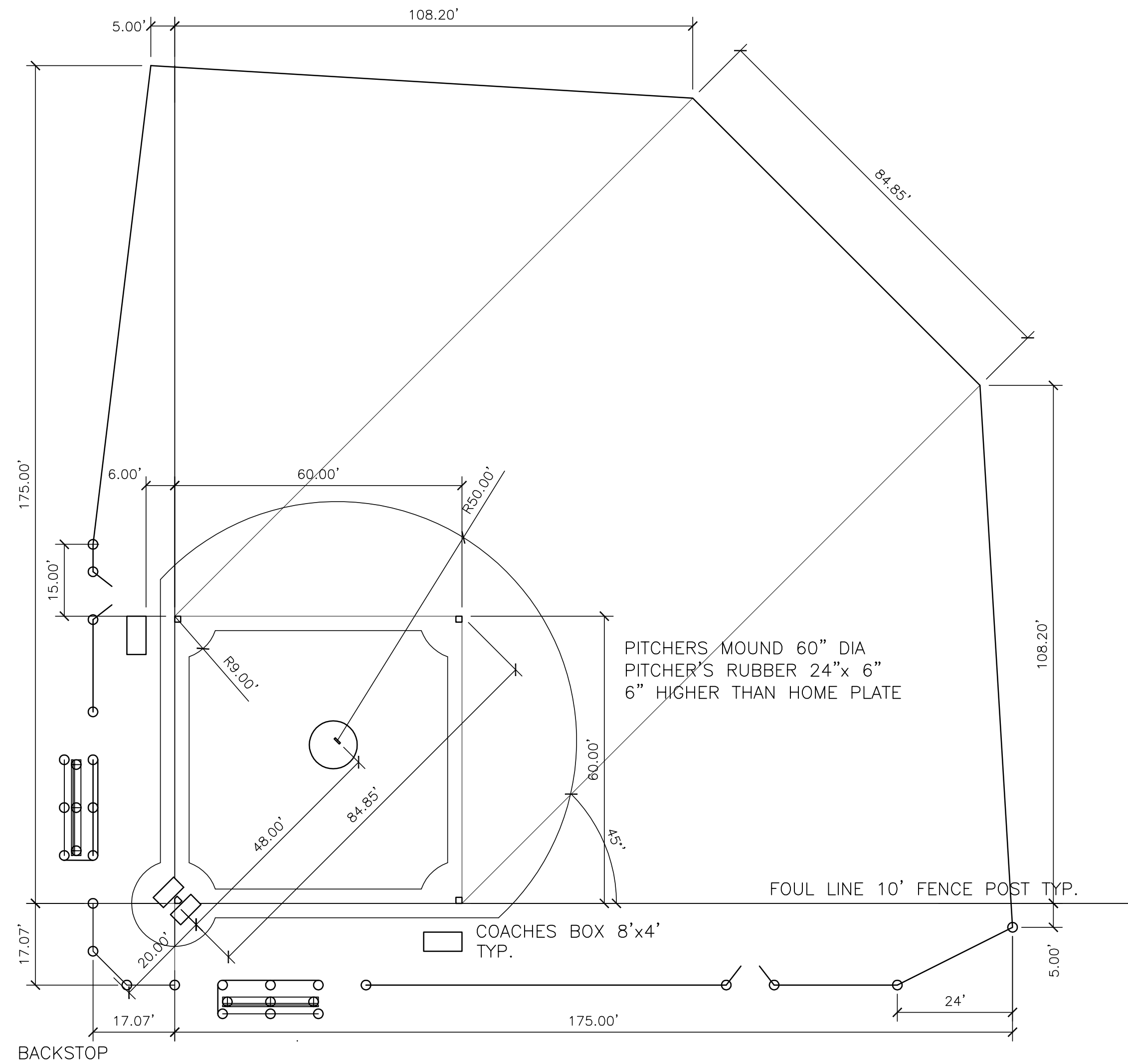
N.T.S.



3 HANDRAIL DETAILS

N.T.S.



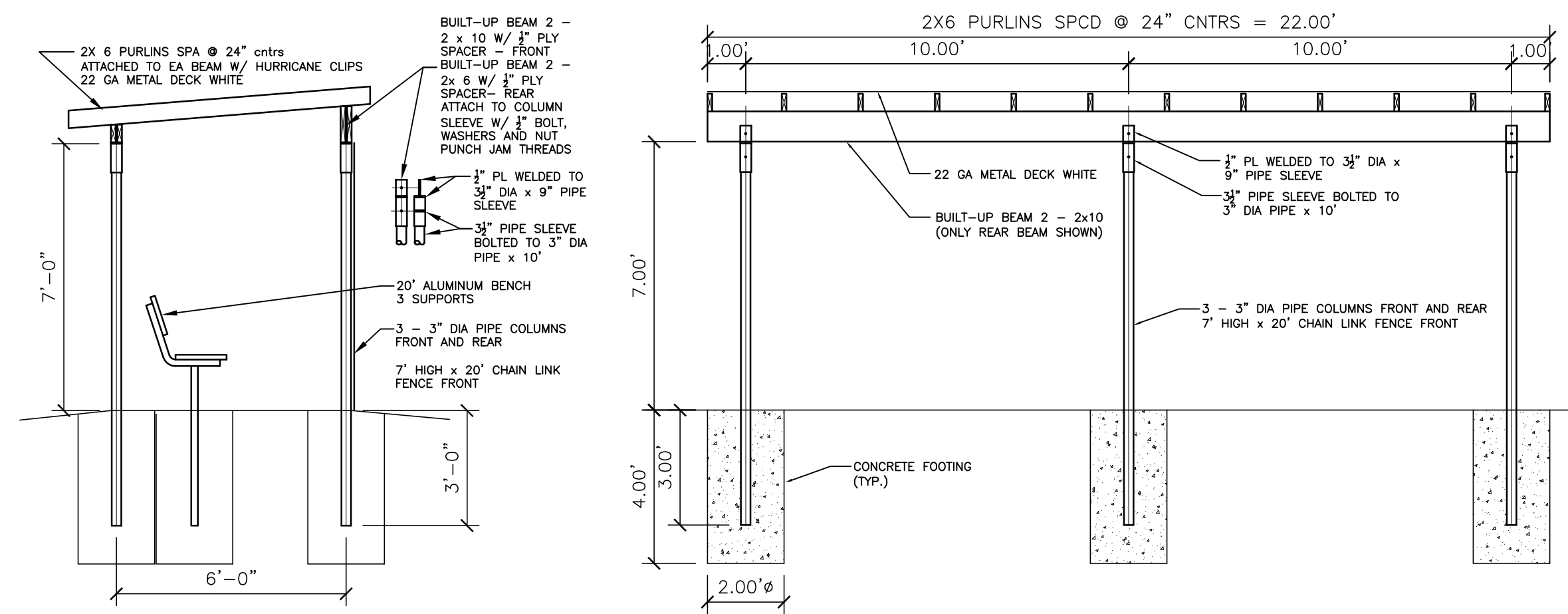


DUGOUT 20'x6'
W/ 20' BENCH TYP.
7' CHAIN LINK
FENCE

42\"/>

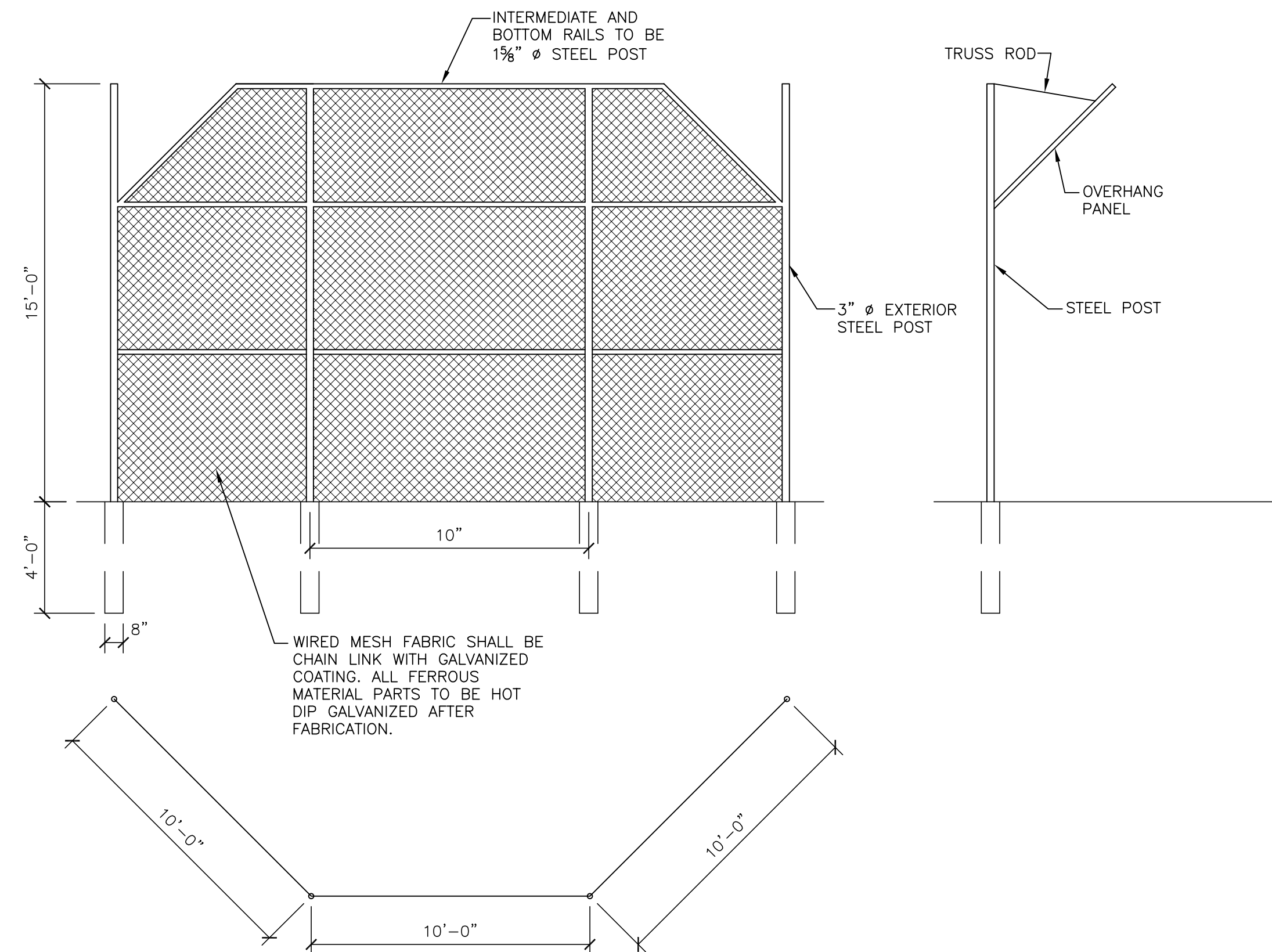
1 LITTLE LEAGUE BASEBALL

C2.3 SCALE: 1"=20'



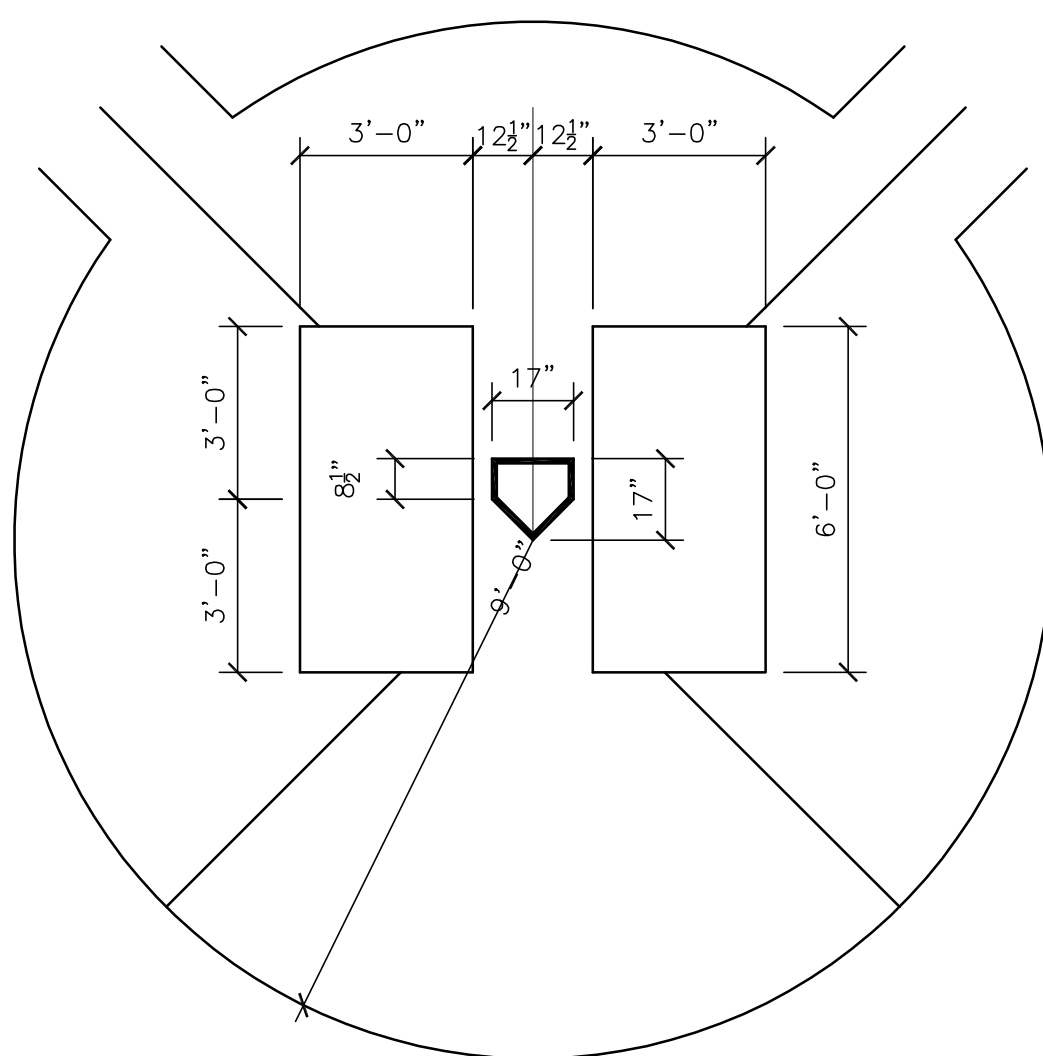
4 20'x 6' DUGOUT AND 20' BENCH DETAIL

C2.3 NOT TO SCALE

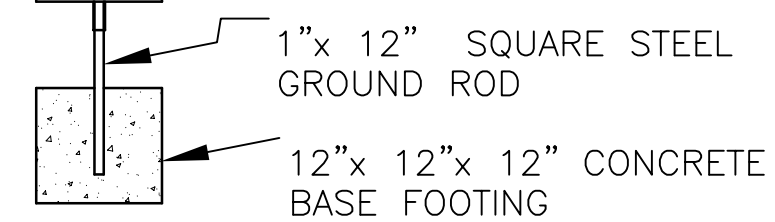


5 BACKSTOP DETAIL

C2.3 NOT TO SCALE



1 - HOME PLATE "BPLCO"
310-SHP
3 - BASE PAD "BOLCO"
100ML MAJOR LEAGUE
15"x 15"x 3" VINYL COVERED
BOLT ON PASE PLATE WITH
1" FEMALE ANCHOR



2 BASE DETAIL

C2.3 NOT TO SCALE

3 HOME PLATE DETAIL

C2.3 NOT TO SCALE

