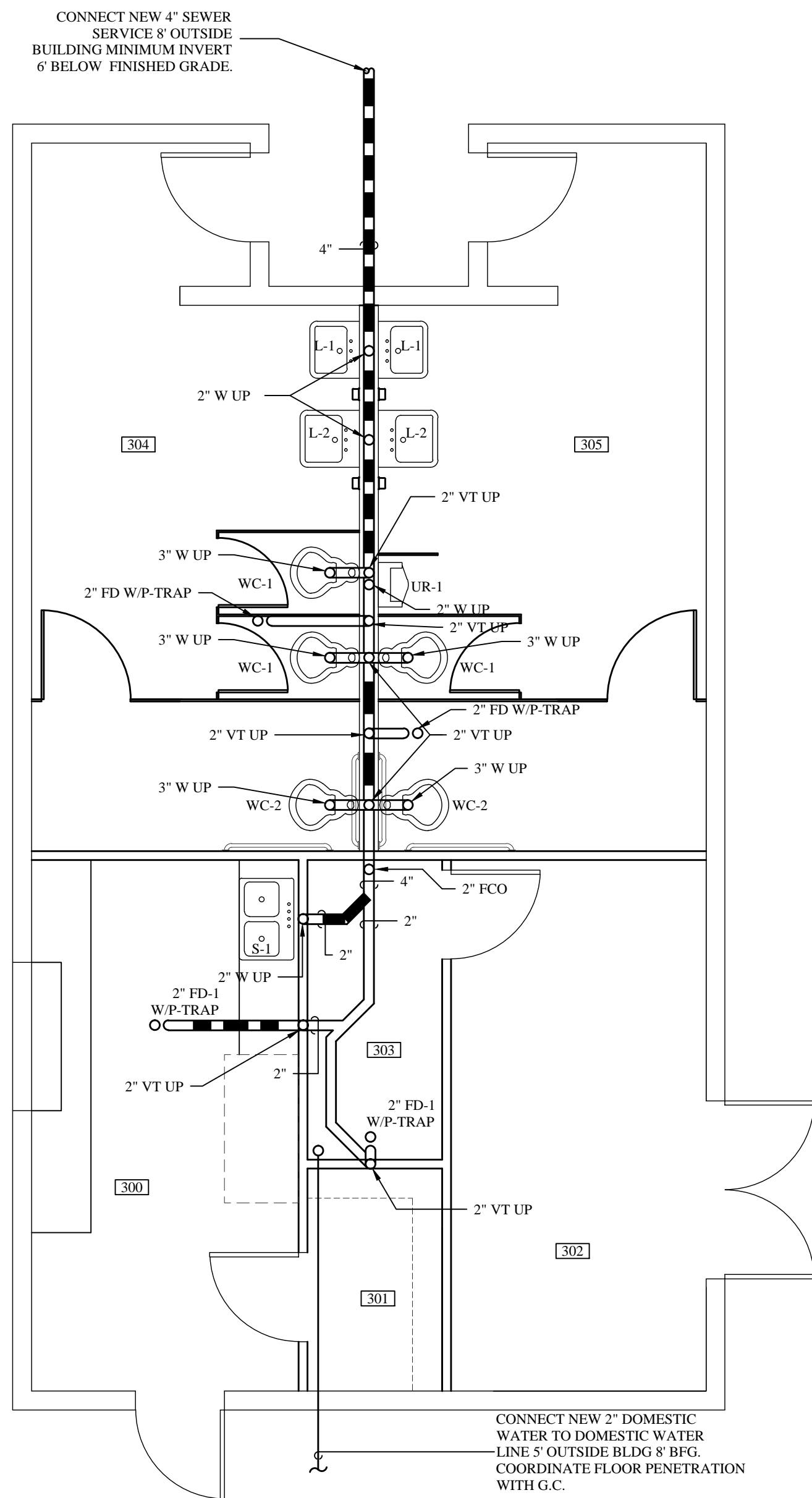
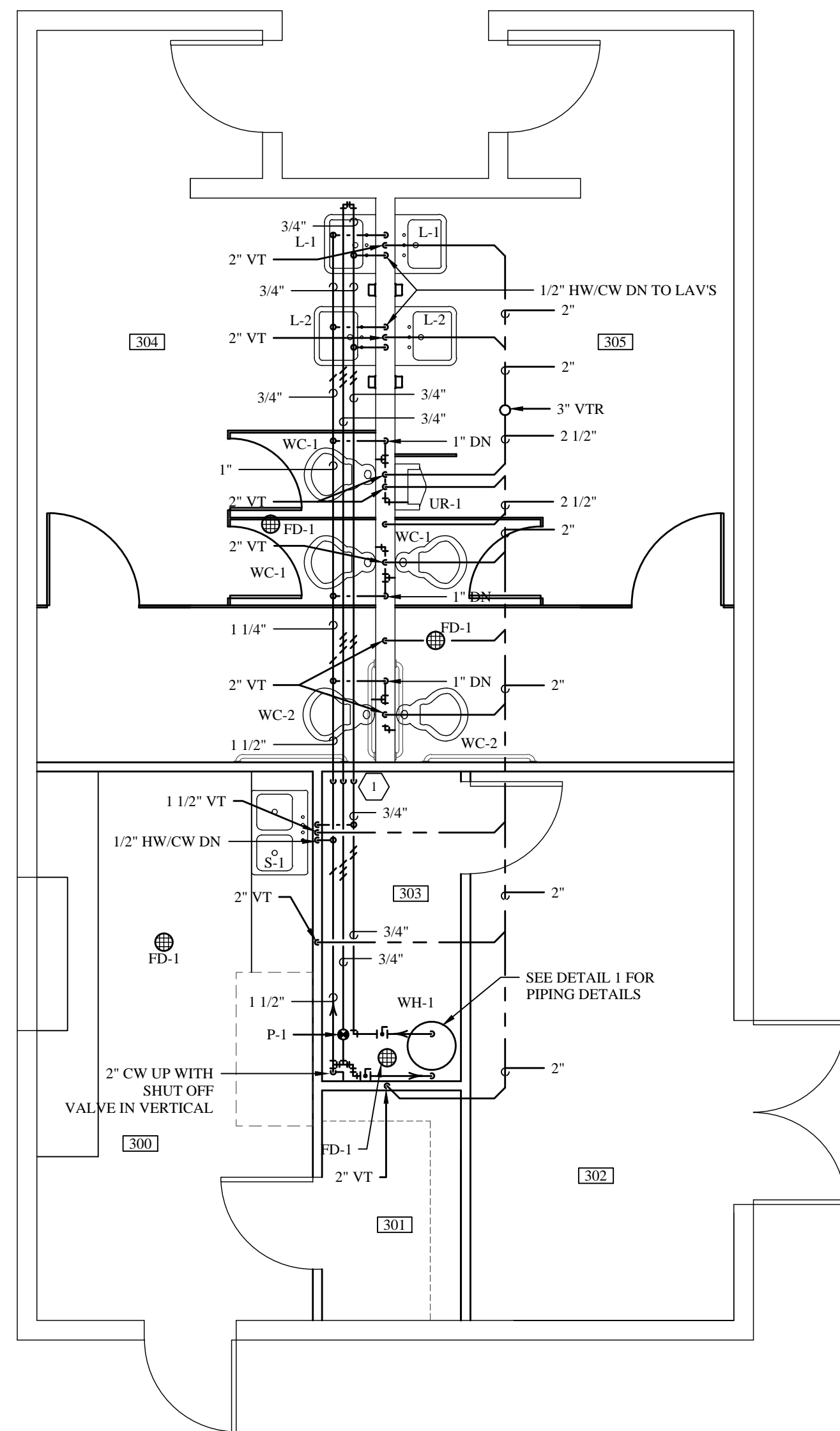


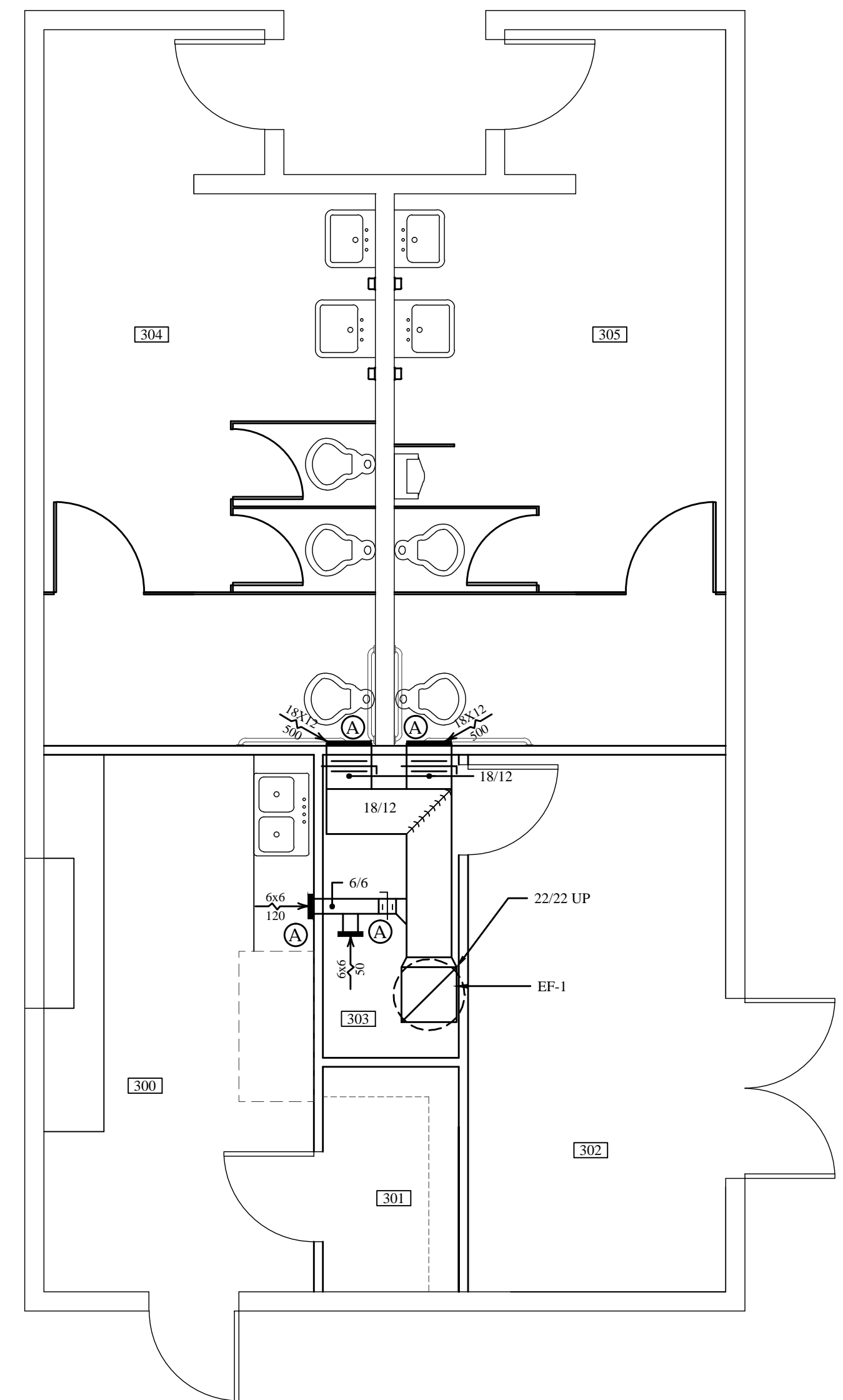
ROOM SCHEDULE	
ROOM	#
CONCESSIONS	300
KITCHEN STORAGE	301
MECHANICAL	302
EQPM STORAGE	303
WOMEN'S RESTROOM	304
MEN'S RESTROOM	305



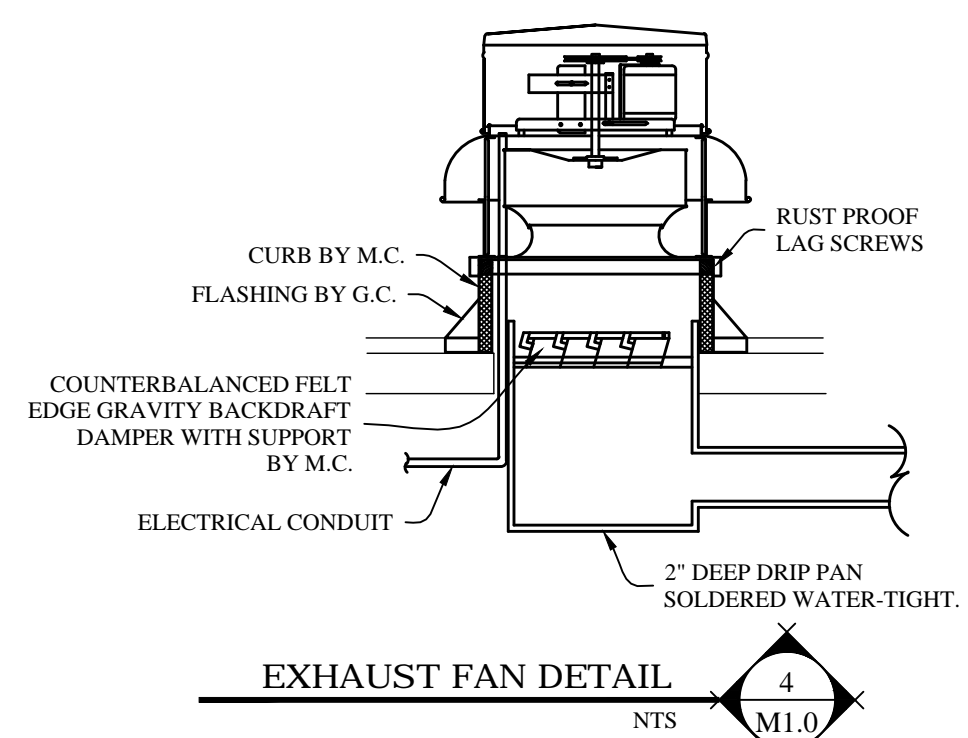
CONCESSION STAND UNDERGROUND PIPING PLAN
1/4" = 1'-0" M1.0



CONCESSION STAND DOMESTIC PIPING PLAN
1/4" = 1'-0" M1.0

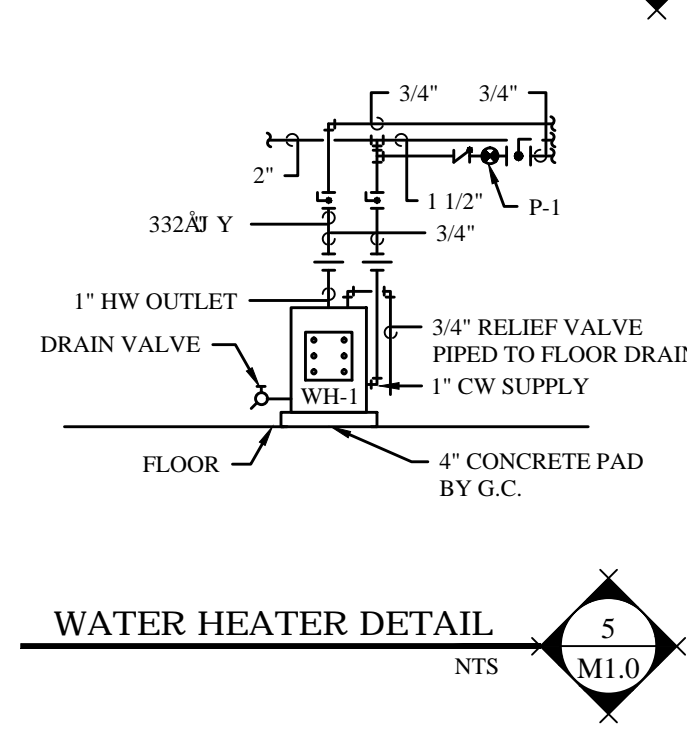


CONCESSION STAND HVAC PLAN
1/4" = 1'-0" M1.0



REGISTER & GRILLE SCHEDULE							
MARK	MANUFACTURER	MODEL	FUNCTION	SIZE	FINISH	FRAME	NOTES
(A)	PRICE	910	EXHAUST	AS NOTED	B-12	C	1

1. ALUMINUM GRILLES.



ELECTRIC WATER HEATER						
MARK	MANUFACTURER	MODEL	KW	GALLON	RECOVERY IN GAL/HR @ 30 DEG. F	ELECTRICAL
WH-1	A.O.SMITH	DSE-20	18	20	20.4	208-3-60

STANDARD ABBREVIATIONS	
AD	- ACCESS DOOR
AFF	- ABOVE FINISHED FLOOR
AFG	- ABOVE FINISHED GRADE
ATC	- AUTOMATIC TEMPERATURE CONTROLS
BDD	- BACK DRAFT DAMPER
BFG	- BELOW FINISHED GRADE
BFF	- BELOW FINISHED FLOOR
CA	- COMBUSTION AIR
CO	- CLEAN OUT
CW	- COLD WATER
EC	- ELECTRICAL CONTRACTOR
FA	- FRESH AIR
FCO	- FLOOR CLEAN OUT
FD	- FLOOR DRAIN
FDR	- FIRE DAMPER
GC	- GENERAL CONTRACTOR
HW	- HOT WATER
MC	- MECHANICAL CONTRACTOR
OBDD	- OPPOSED BLADE DAMPER
PRV	- POWER ROOF VENTILATOR
RA	- RETURN AIR
RD	- ROOF DRAIN
RHW	- RECIRCULATING HOT WATER
SA	- SUPPLY AIR
SFD	- SMOKE/FIRE DAMPER
VD	- VOLUME DAMPER
VT	- VENT
VTR	- VENT THRU ROOF
W	- WASTE
WCO	- WALL CLEAN OUT
WH	- WALL HYDRANT

PIPE LEGEND	
	UNDER GROUND STORM DRAIN
	UNDER GROUND WASTE
	ABOVE GROUND WASTE
	ABOVE GROUND VENT
	DOMESTIC COLD WATER
	DOMESTIC HOT WATER
	RECIRC. HOT WATER
	BALL VALVE
	CHECK VALVE
	BUTTERFLY VALVE
	SHUTOFF VALVE IN VERTICAL
	UNION

FAN SCHEDULE	
MARK	F-1
TYPE	UPDRAFT
MANUFACTURER	GREENHECK
MODEL NO.	GB-0141
CFM	1120
S.P.	.5
RPM	1725
FAN HP	1/4
ELECTRICAL	115-1-50
SONES	6.8
CONTROL	W/LIGHTS
REMARKS	

HVAC LEGEND	
	POSITIVE PRESSURE AIR DUCT
	NEGATIVE PRESSURE AIR DUCT
	MANUAL VOLUME DAMPER
	ELBOW WITH TURNING VANE
	COMB. SMOKE/FIRE DAMPER
	MOTORIZED DAMPER
	FIRE DAMPER
	REHEAT COIL
	ACCESS DOOR
	HI-EFFICIENCY TAKEOFF (W/ VOLUME DAMPER)

GENERAL NOTES

- OFFSET PIPING WHERE REQUIRED TO ALLOW CLEARANCE OF DUCTS, ELECTRICAL CONDUIT AND OUTLET BOXES, BEAMS, ETC. TO AVOID INTERFERENCE WITH WORK OF OTHER TRADES. TO INCREASE HEAD ROOM UNDER PIPES OR TO IMPROVE THE APPEARANCE OF PIPE WORK, THIS CONTRACTOR SHALL OFFSET ANY PIPING AS DIRECTED BY THE ARCHITECT/ENGINEER AND SHALL PROPERLY DRAIN OR VENT SAME WHERE NECESSARY. MAKE ALLOWANCES IN BID THERETO.
- THIS CONTRACTOR SHALL FIELD VERIFY LOCATIONS FOR ALL DUCTWORK AND PIPING FOR INSTALLATION PRIOR TO FABRICATION.
- THIS CONTRACTOR SHALL COORDINATE HIS WORK WITH THE OTHER CONTRACTORS ON THE PROJECT AND INSTALL MECHANICAL SYSTEMS IN A MANNER WHICH WILL CONFORM TO STRUCTURE, KEEP PASSAGeways AND OPENINGS CLEAR. PRESERVE HEAD ROOM, CLEAR LIGHTING FIXTURES AND NOT COVER UP JUNCTION BOXES. THIS CONTRACTOR SHALL MAKE OFFSETS IN PIPING OR DUCTWORK TO AVOID INTERFERENCE WITH OTHER TRADES, AT NO ADDITIONAL COST TO THE OWNER, WHEN SO DIRECTED BY THE ARCHITECT/ENGINEER.

KEYNOTES

(1) TRANSFER HW/CW/RECIRC PIPING INTO ATTIC SPACE AND BELOW INSULATION LAYER.

NORTH

PRELIMINARY PLANS
NOT FOR CONSTRUCTION
9/21/09

PRAIRIE ENGINEERING, P.C.

HVAC LEGEND	
	POSITIVE PRESSURE AIR DUCT
	NEGATIVE PRESSURE AIR DUCT
	MANUAL VOLUME DAMPER
	ELBOW WITH TURNING VANE
	COMB. SMOKE/FIRE DAMPER
	MOTORIZED DAMPER
	FIRE DAMPER
	REHEAT COIL
	ACCESS DOOR
	HI-EFFICIENCY TAKEOFF (W VOLUME DAMPER)

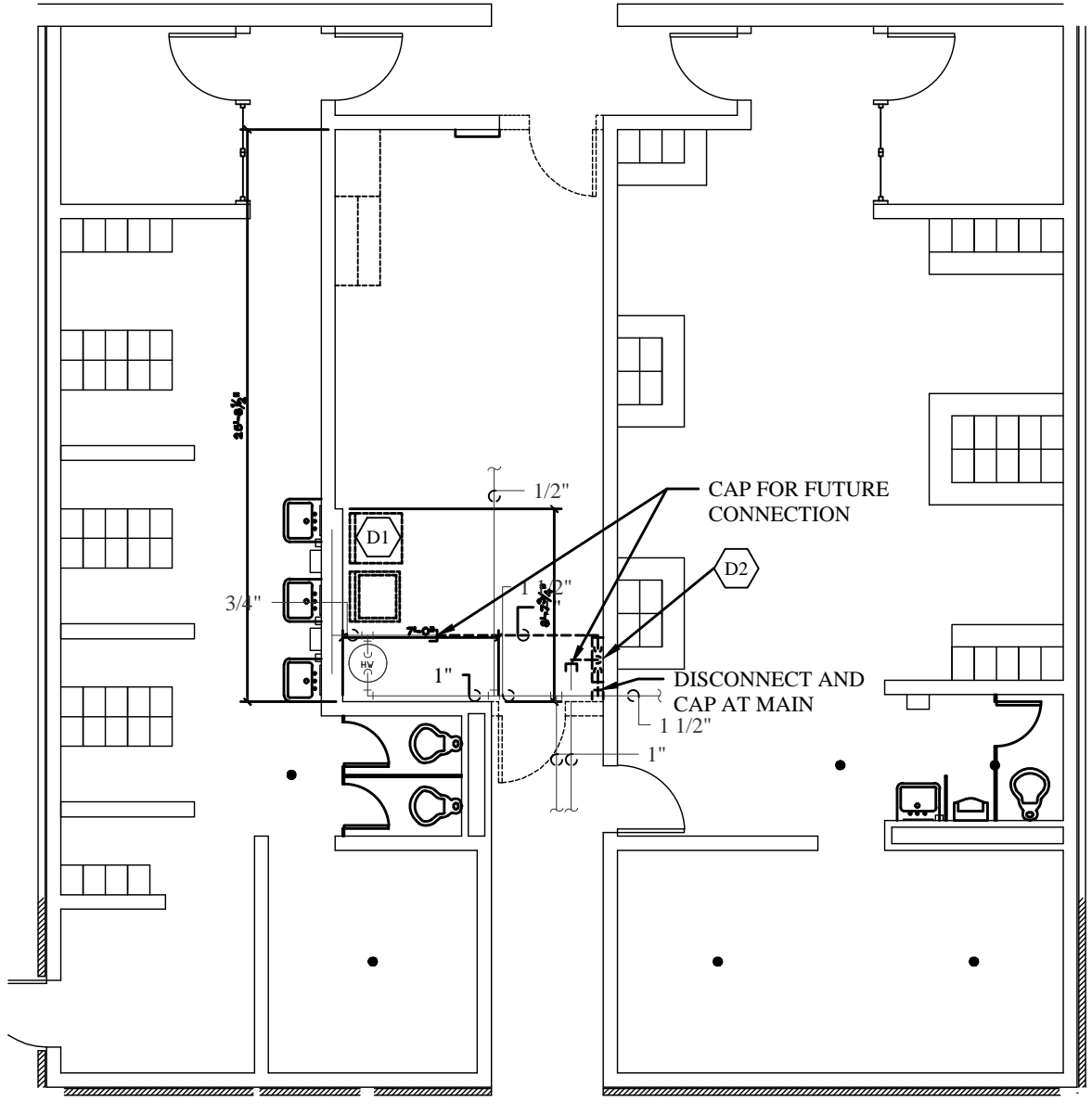
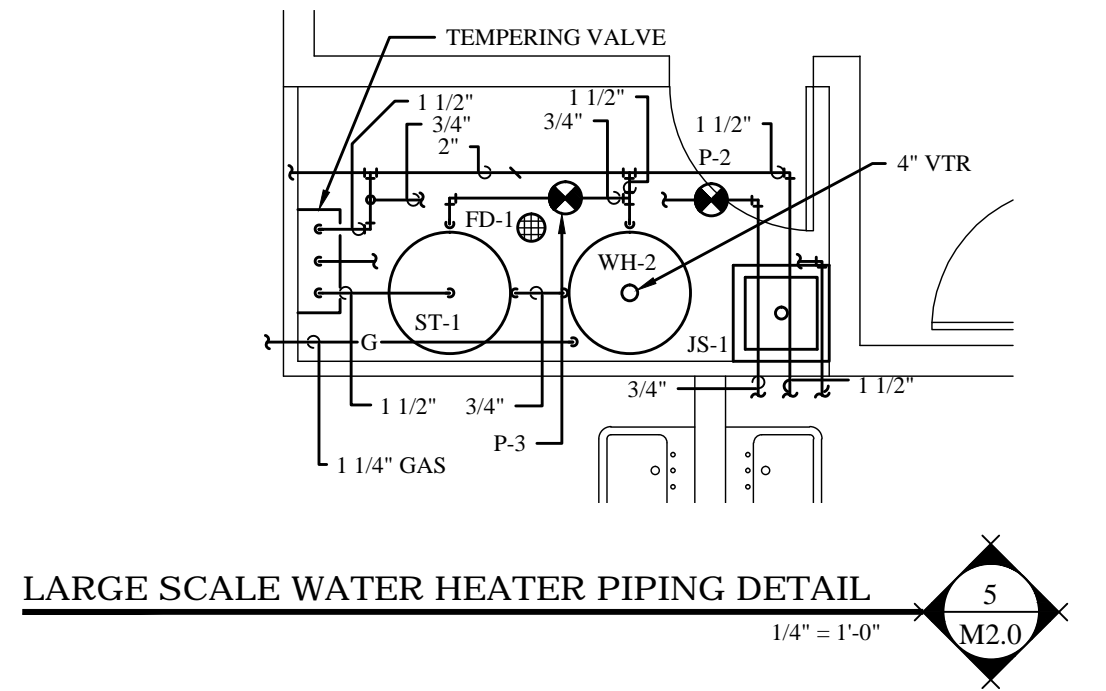
STANDARD ABBREVIATIONS	
AD	- ACCESS DOOR
AFF	- ABOVE FINISHED FLOOR
AFG	- ABOVE FINISHED GRADE
ATC	- AUTOMATIC TEMPERATURE CONTROLS
BDD	- BACK DRAFT DAMPER
BFG	- BELOW FINISHED GRADE
BFF	- BELOW FINISHED FLOOR
CA	- COMBUSTION AIR
CO	- CLEAN OUT
CW	- COLD WATER
EC	- ELECTRICAL CONTRACTOR
FA	- FRESH AIR
FCO	- FLOOR CLEAN OUT
FD	- FLOOR DRAIN
FDR	- FIRE DAMPER
GC	- GENERAL CONTRACTOR
HW	- HOT WATER
MC	- MECHANICAL CONTRACTOR
OBD	- OPPOSED BLADE DAMPER
PRV	- POWER ROOF VENTILATOR
RA	- RETURN AIR
RD	- ROOF DRAIN
RHW	- RECIRCULATING HOT WATER
SA	- SUPPLY AIR
SFD	- SMOKE/FIRE DAMPER
VD	- VOLUME DAMPER
VT	- VENT
VTR	- VENT THRU ROOF
W	- WASTE
WCO	- WALL CLEAN OUT
WH	- WALL HYDRANT

- GENERAL NOTES**
- FIELD VERIFY ALL PERTINENT EXISTING CONDITIONS (ELECTRICAL, STRUCTURAL, PIPING, DUCTWORK) AND INSTALLATION REQUIREMENTS IN CONNECTION WITH REMODEL. MAKE ALLOWANCES IN BID THERETO.
 - OFFSET PIPING WHERE REQUIRED TO ALLOW CLEARANCE OF DUCTS, ELECTRICAL CONDUIT AND OUTLET BOXES, BEAMS, ETC. TO AVOID INTERFERENCE WITH WORK OF OTHER TRADES, TO INCREASE HEAD ROOM UNDER PIPES OR TO IMPROVE THE APPEARANCE OF PIPE WORK, THIS CONTRACTOR SHALL OFFSET ANY PIPING AS DIRECTED BY THE ARCHITECT/ENGINEER AND SHALL PROPERLY DRAIN OR VENT SAME WHERE NECESSARY. MAKE ALLOWANCES IN BID THERETO.
 - THIS CONTRACTOR SHALL FIELD VERIFY LOCATIONS FOR ALL DUCTWORK AND PIPING FOR INSTALLATION PRIOR TO FABRICATION.
 - THIS CONTRACTOR SHALL COORDINATE HIS WORK WITH THE OTHER CONTRACTORS ON THE PROJECT AND INSTALL MECHANICAL SYSTEMS IN A MANNER WHICH WILL CONFORM TO STRUCTURE, KEEP PASSAGEWAYS AND OPENINGS CLEAR, PRESERVE HEAD ROOM, CLEAR LIGHTING FIXTURES AND NOT COVER UP JUNCTION BOXES. THIS CONTRACTOR SHALL MAKE OFFSETS IN PIPING OR DUCTWORK TO AVOID INTERFERENCE WITH OTHER TRADES, AT NO ADDITIONAL COST TO THE OWNER, WHEN SO DIRECTED BY THE ARCHITECT/ENGINEER.
 - WHERE PIPING IS CONNECTED TO EQUIPMENT OR PLUMBING FIXTURES THAT ARE BEING REMOVED, THE PIPING SHALL BE REMOVED COMPLETELY (UNLESS NOTED OTHERWISE) FROM THE REMODELED SPACE AND CAPPED AT OR NEAR THE MAINS. PLUMBING PIPING THAT IS LOCATED IN A WALL TO BE REMOVED, SHALL BE REMOVED (IF NOT ACTIVE) AND CAPPED AT THE MAIN LINE OR OUT OF THE REMODELED SPACE.

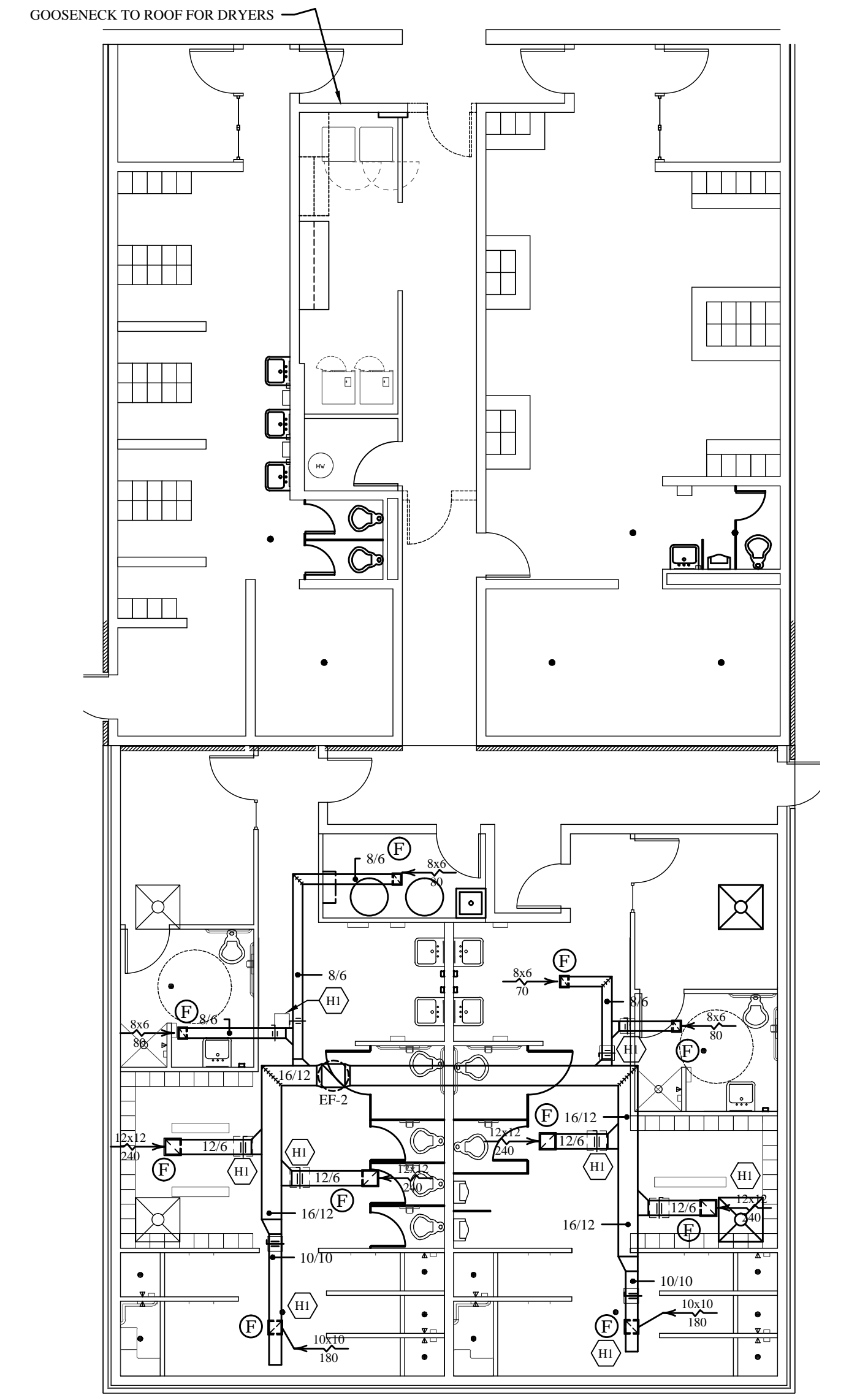
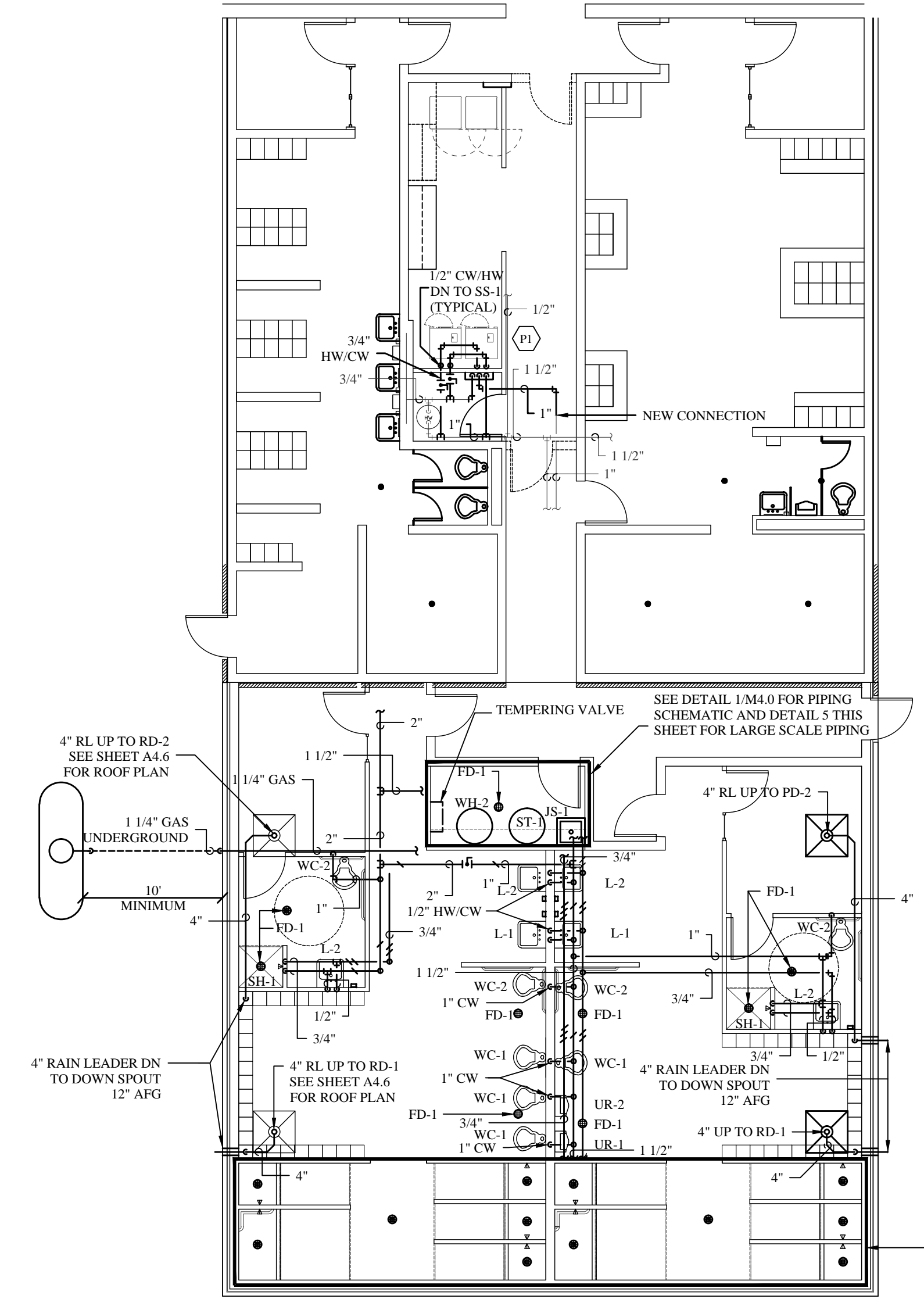
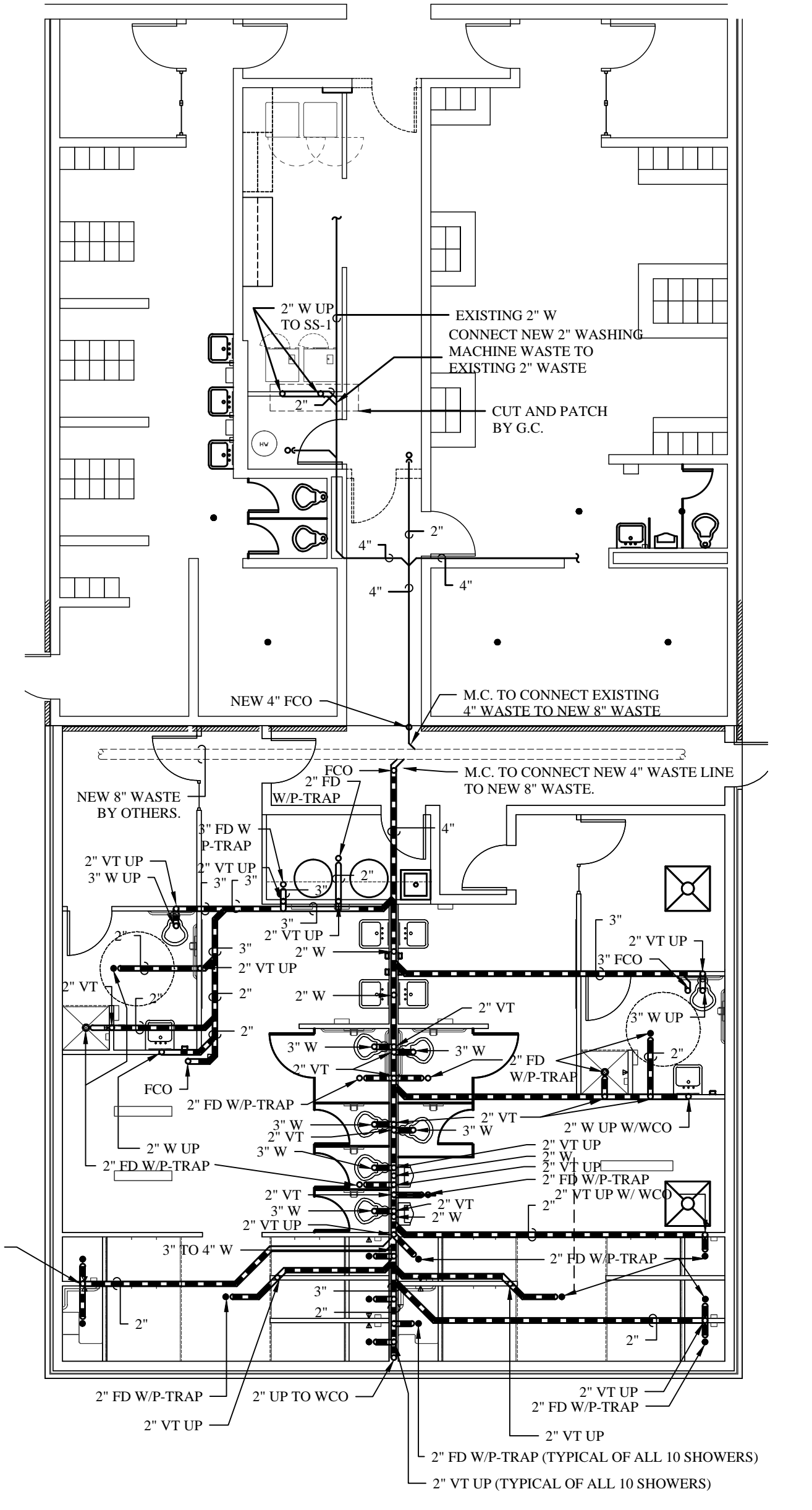
PIPE LEGEND	
	UNDER GROUND STORM DRAIN
	UNDER GROUND WASTE
	UNDER GROUND VENT
	ABOVE GROUND WASTE
	ABOVE GROUND VENT
	DOMESTIC COLD WATER
	1/2" QVY CVGT "332A
	3/4" QVY CVGT "332A
	1" QVY CVGT "362A
	BALL VALVE
	CHECK VALVE
	BUTTERFLY VALVE
	SHUTOFF VALVE IN VERTICAL UNION

KEYNOTES

(H) PROVIDE ACCESS PANEL FOR HVAC/PLUMBING CONTROL FIXTURES. COORDINATE WITH LOCATION G.C.



- DEMOLITION KEYNOTES**
- (D1) DISCONNECT HW/CW/WASTE AND VENT TO EXISTING WASHING MACHINE AND CAP AT MAIN.
 - (D2) REMOVE EXISTING TEMPERING VALVE FOR RELOCATION. DISCONNECT EXISTING HW/CW/TEMPERED WATER AND CAP FOR FUTURE CONNECTION.

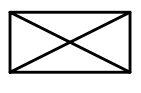
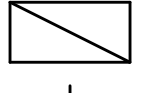
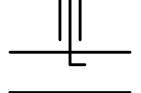

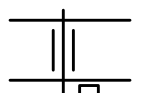
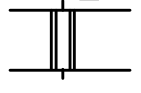

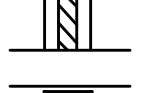
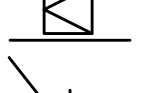
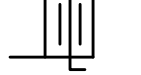


PRELIMINARY PLANS
NOT FOR CONSTRUCTION
9/21/09
PRAIRIE ENGINEERING, P.C.

STANDARD ABBREVIATIONS

- AD - ACCESS DOOR
- AFF - ABOVE FINISHED FLOOR
- AFG - ABOVE FINISHED GRADE
- ATC - AUTOMATIC TEMPERATURE CONTROLS
- BDD - BACK DRAFT DAMPER
- BFG - BELOW FINISHED GRADE
- BFF - BELOW FINISHED FLOOR
- CA - COMBUSTION AIR
- CO - CLEAN OUT
- CW - COLD WATER
- EC - ELECTRICAL CONTRACTOR
- FA - FRESH AIR
- FCO - FLOOR CLEAN OUT
- FD - FLOOR DRAIN
- FDR - FIRE DAMPER
- GC - GENERAL CONTRACTOR
- HW - HOT WATER
- MC - MECHANICAL CONTRACTOR
- OBDD - OPPOSED BLADE DAMPER
- PRV - POWER ROOF VENTILATOR
- RA - RETURN AIR
- RD - ROOF DRAIN
- RHW - RECIRCULATING HOT WATER
- SA - SUPPLY AIR
- SFD - SMOKE/FIRE DAMPER
- VD - VOLUME DAMPER
- VT - VENT
- VTR - VENT THRU ROOF
- W - WASTE
- WCO - WALL CLEAN OUT
- WH - WALL HYDRANT

HVAC LEGEND

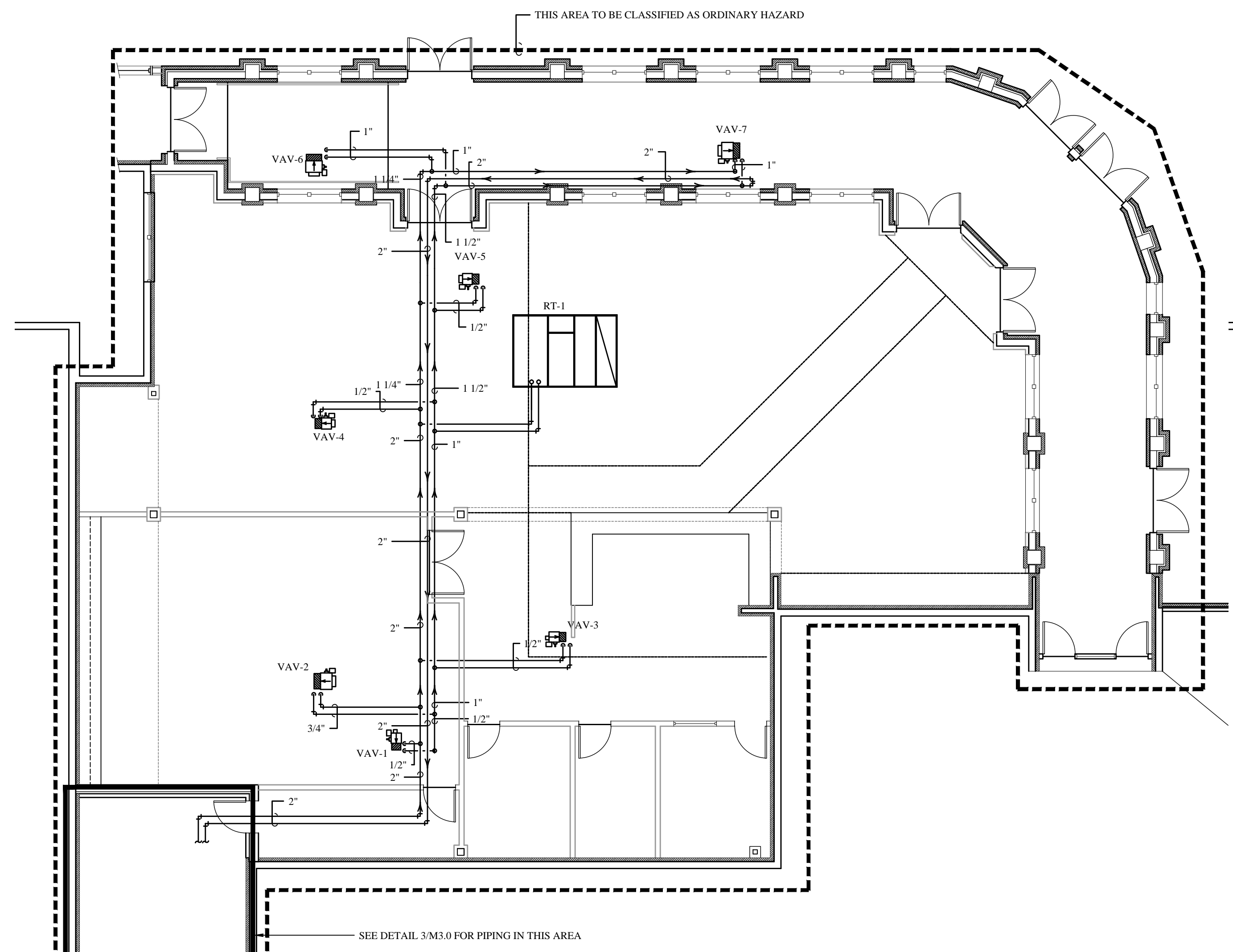
-  POSITIVE PRESSURE AIR DUCT
-  NEGATIVE PRESSURE AIR DUCT
-  MANUAL VOLUME DAMPER
-  ELBOW WITH TURNING VANE
-  COMB. SMOKE/FIRE DAMPER
-  MOTORIZED DAMPER
-  FIRE DAMPER
-  REHEAT COIL
-  ACCESS DOOR
-  HI-EFFICIENCY TAKEOFF (W/ VOLUME DAMPER)

KEYNOTES

(1) GRILLES TO BE MOUNTED IN ACOUSTICAL TILE ON THE SLOPED CEILING.

KEYNOTES

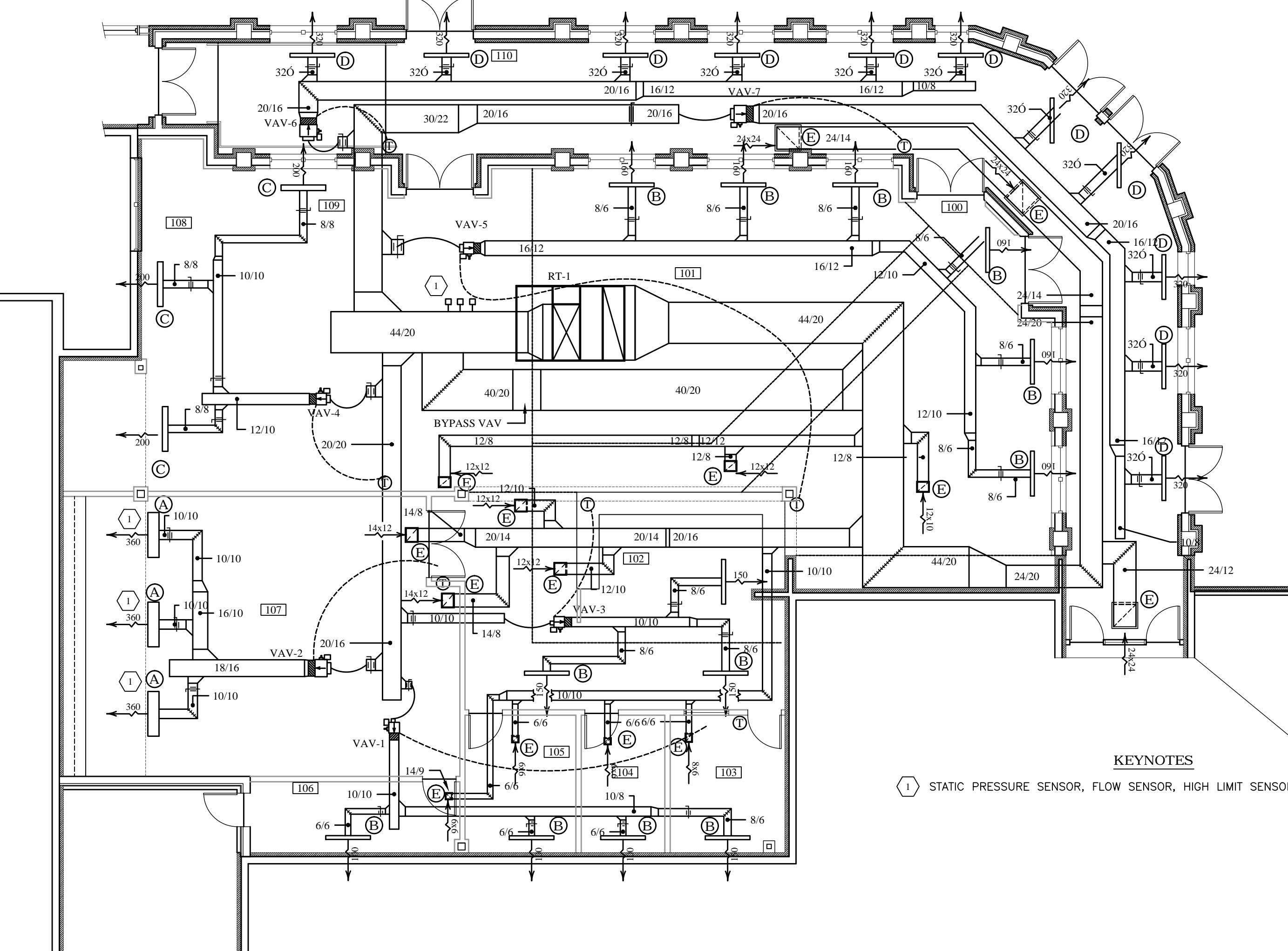
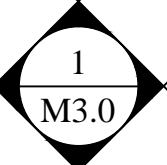
(1) STATIC PRESSURE SENSOR, FLOW SENSOR, HIGH LIMIT SENSOR



LIBRARY MECHANICAL PIPING PLAN

NORTH

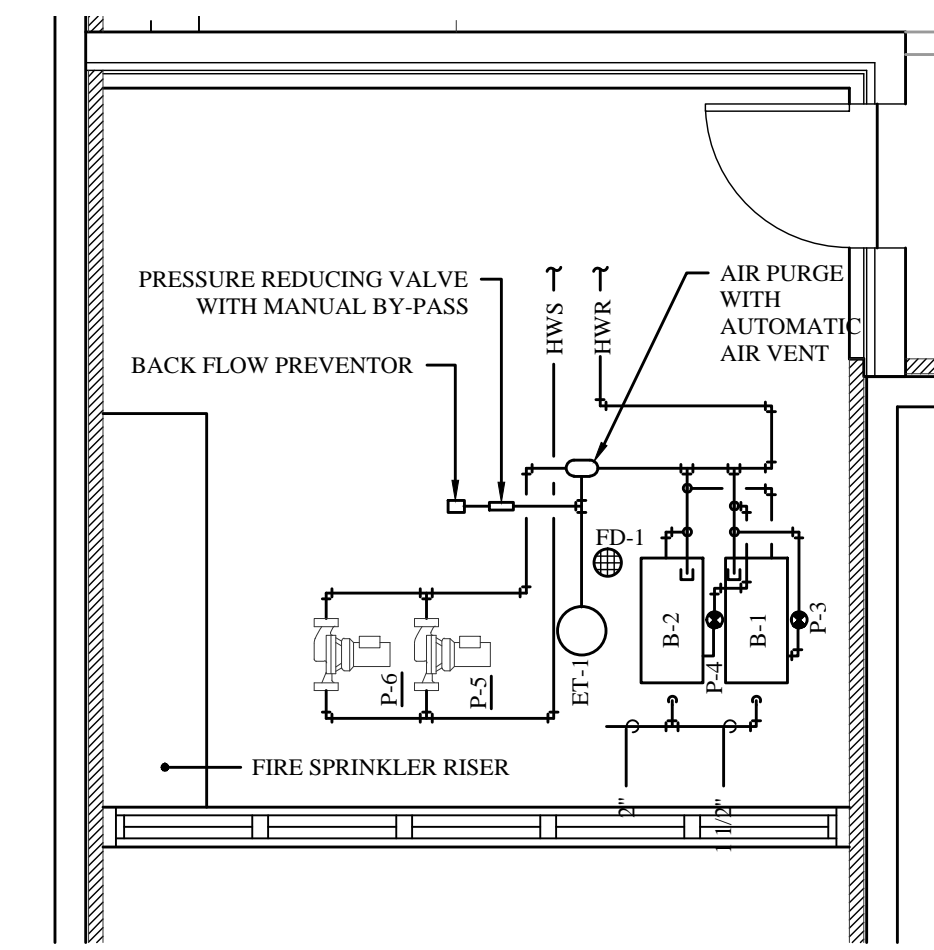
1/8" = 1'-0"



LIBRARY MECHANICAL PLAN

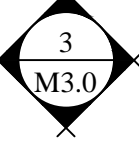
NORTH

1/8" = 1'-0"



MECHANICAL ROOM LARGE SCALE PIPING

1/4" = 1'-0"



VAV SCHEDULE

MARK	EQUIVALENT TO	CFM			MODEL	VAV SIZE	PRESSURE DROP		COIL				INLET SIZES		
		MAX.	MIN.	HTG.			AIR	WATER	ROWS	MBH	GPM	EAT	LAT	VAV	DUCT
VAV-1	TRANE	450	68	360	VCWF	8"	0.25	0.20	2	21.69	1.5	77A	327A	8"	10"
VAV-2	TRANE	1080	162	864	VCWF	10"	0.38	1.38	2	43.38	3.0	77A	327A	10"	12"
VAV-3	TRANE	450	68	360	VCWF	8"	0.25	0.20	2	21.69	1.5	77A	327A	8"	10"
VAV-4	TRANE	600	90	480	VCWF	8"	0.29	0.28	2	23.86	1.9	77A	327A	8"	10"
VAV-5	TRANE	600	90	480	VCWF	8"	0.29	0.28	2	23.86	1.9	77A	327A	8"	10"
VAV-6	TRANE	2000	300	1600	VCWF	14"	0.45	1.72	2	51.1	4.2	77A	327A	14"	16"
VAV-7	TRANE	2000	300	1600	VCWF	14"	0.45	1.72	2	51.1	4.2	77A	327A	14"	16"

ROOM SCHEDULE

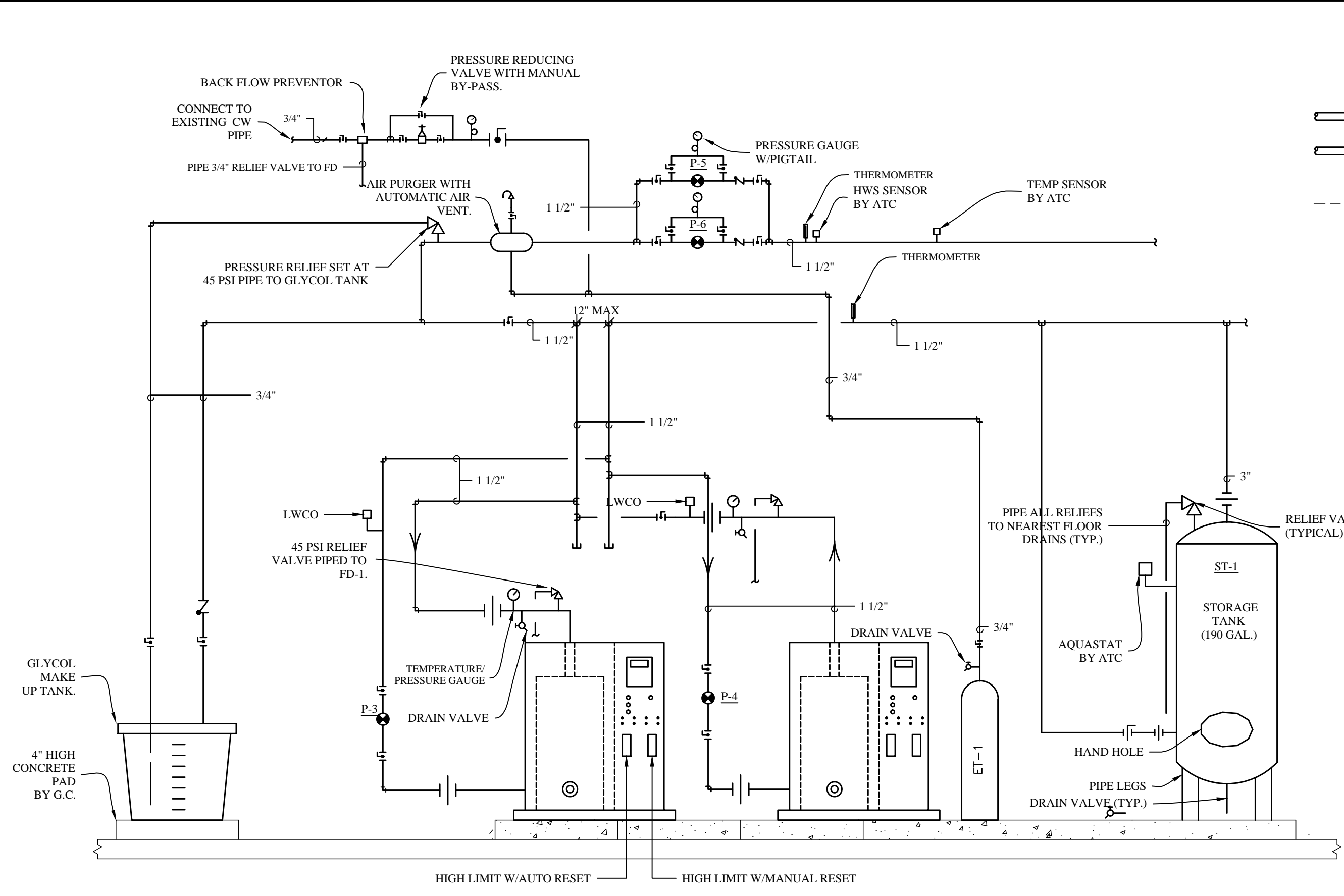
ROOM	#
ENTRY	100
READING/BROWSING	101
CIRCULATION DESK	102
LIBRARIANS OFFICE	103
STORAGE/WORKROOM	104
AUDIO VISUAL	105
STORAGE	106
DISTANCE LEARNING	107
PROF. PUBS.	108
K-8 READING/BROWSING	109
CULTURAL HERITAGE COR.	110

GENERAL NOTES

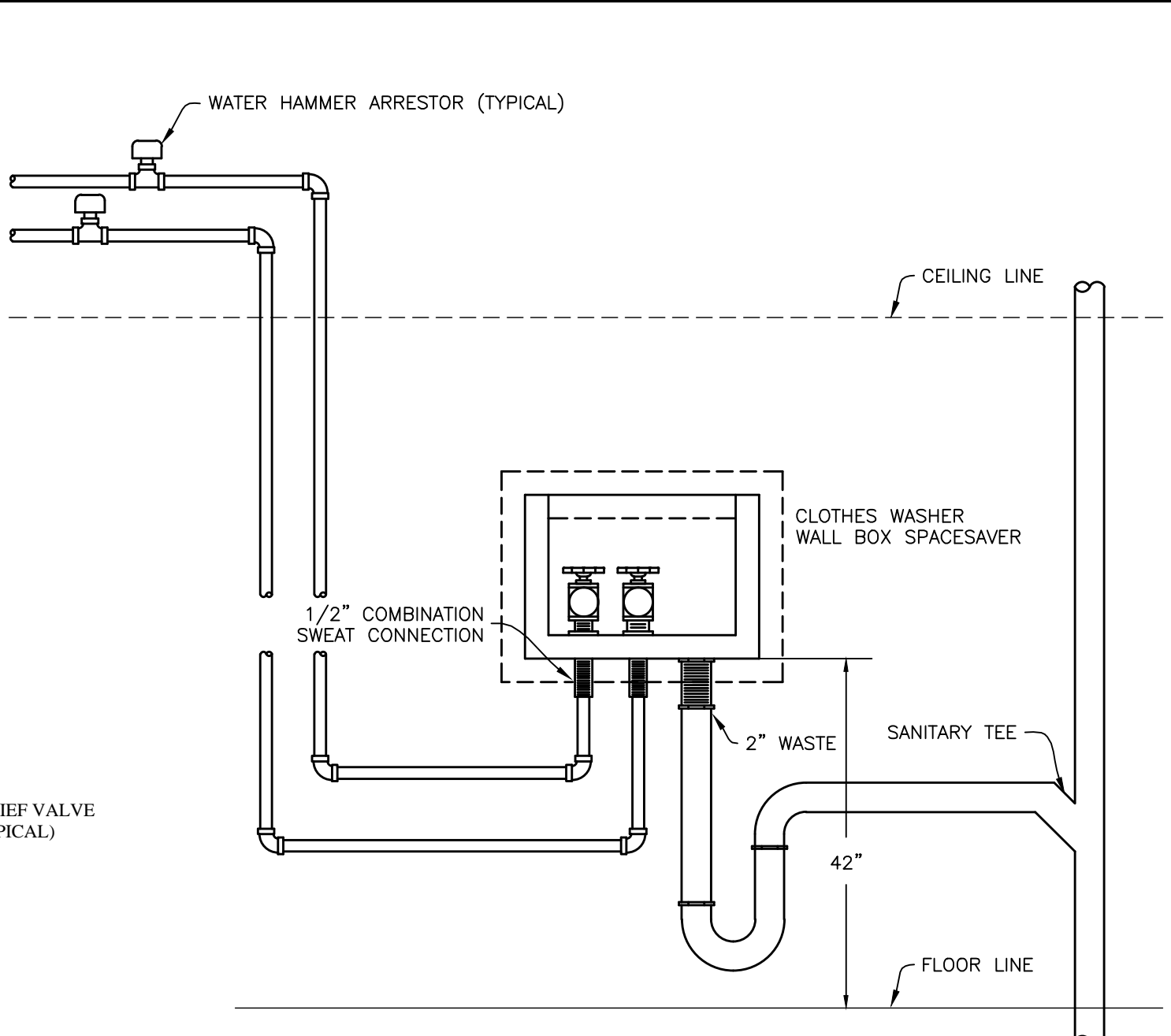
1. OFFSET PIPING WHERE REQUIRED TO ALLOW CLEARANCE OF DUCTS, ELECTRICAL CONDUIT AND OUTLET BOXES, BEAMS, ETC. TO AVOID INTERFERENCE WITH WORK OF OTHER TRADES, TO INCREASE HEAD ROOM UNDER PIPES OR TO IMPROVE THE APPEARANCE OF PIPE WORK, THIS CONTRACTOR SHALL OFFSET ANY PIPING AS DIRECTED BY THE ARCHITECT/ENGINEER AND SHALL PROPERLY DRAW OR VENT SAME WHERE NECESSARY. MAKE ALLOWANCES IN BID THERETO.
2. THIS CONTRACTOR SHALL FIELD VERIFY LOCATIONS FOR ALL DUCTWORK AND PIPING FOR INSTALLATION PRIOR TO FABRICATION.
3. THIS CONTRACTOR SHALL COORDINATE HIS WORK WITH THE OTHER CONTRACTORS ON THE PROJECT AND INSTALL MECHANICAL SYSTEMS IN A MANNER WHICH WILL CONFORM TO STRUCTURE, KEEP PASSAGEWAYS AND OPENINGS CLEAR. PRESERVE HEAD ROOM, CLEAR LIGHTING FIXTURES AND NOT COVER UP JUNCTION BOXES. THIS CONTRACTOR SHALL MAKE OFFSETS IN PIPING OR DUCTWORK TO AVOID INTERFERENCE WITH OTHER TRADES, AT NO ADDITIONAL COST TO THE OWNER, WHEN SO DIRECTED BY THE ARCHITECT/ENGINEER.
4. WHERE PIPING IS CONNECTED TO EQUIPMENT OR PLUMBING FIXTURES THAT ARE BEING REMOVED, THE PIPING SHALL BE REMOVED COMPLETELY (UNLESS NOTED OTHERWISE) FROM THE REMODELED SPACE AND CAPPED AT OR NEAR THE MAINS. PLUMBING PIPING THAT IS LOCATED IN A WALL TO BE REMOVED, SHALL BE REMOVED (IF NOT ACTIVE) AND CAPPED AT THE MAIN LINE OR OUT OF THE REMODELED SPACE.

PRELIMINARY PLANS NOT FOR CONSTRUCTION
9/21/09

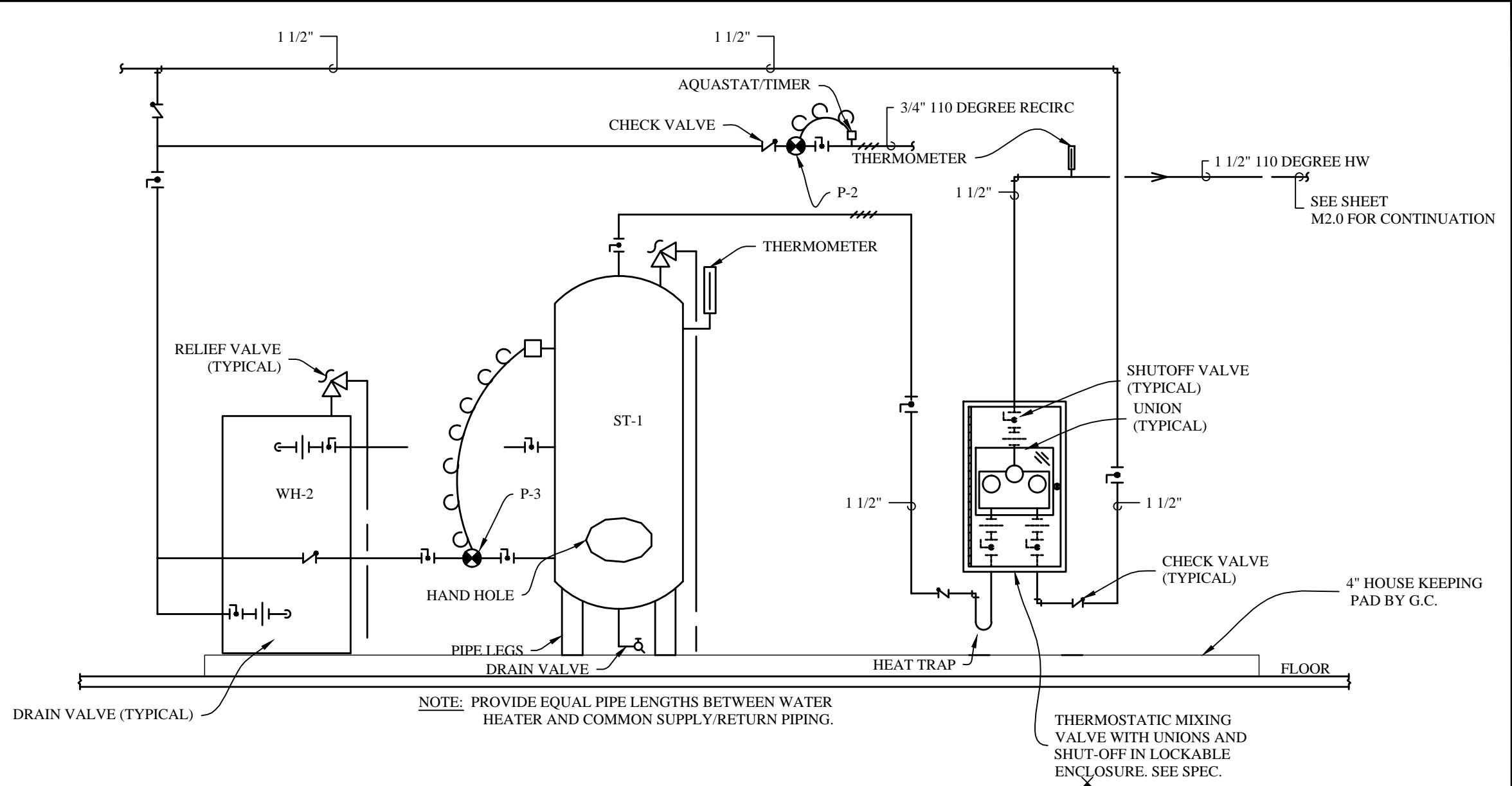
PRAIRIE ENGINEERING, P.C.



BOILER PIPING DETAIL
NTS
8
M2.1



SPAVE SAVER PIPING DETAIL
NTS
5
M2.1



HOT WATER HEATER DETAIL
NTS
1
M2.1

REGISTER & GRILLE SCHEDULE

MARK	EQUIVALENT TO	MODEL	FUNCTION	SIZE	FINISH	FRAME	NOTES
A	PRICE	AS275, 2.5 SLOT	SUPPLY	10" INLET	B-12	TYPE 21	4'-0"
B	PRICE	AS210, 1 SLOT	SUPPLY	8" INLET	B-12	TYPE 21	4'-0"
C	PRICE	AS210, 2 SLOT	SUPPLY	10" INLET	B-12	TYPE 21	4'-0"
D	PRICE	AS220, 2 SLOT	SUPPLY	12" INLET	B-12	TYPE 21	4'-0"
E	PRICE	520	RETURN	AS NOTED	B-12	F-BORDER	
F	PRICE	920	EXHAUST	ON DRAWING	B-12	FD	0'-1"

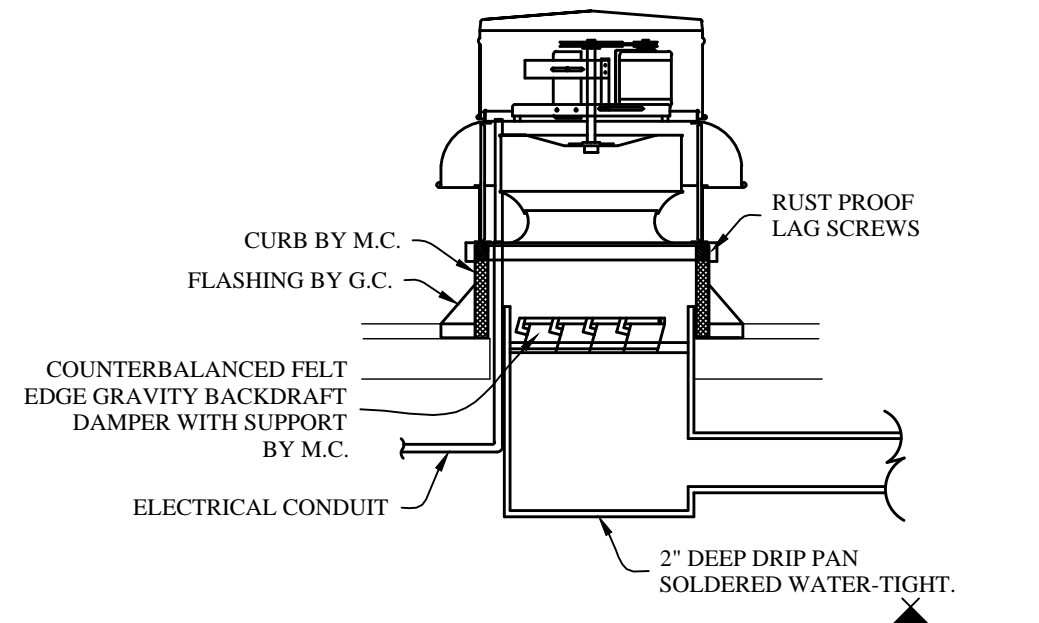
1. ALUMINUM GRILLE IN RESTROOMS AND SHOWERS WITH OBD'S.

GAS BOILER SCHEDULE

MARK	MANUFACTURER	MODEL	TYPE	MBH RATING	KW	ELECTRICAL	STEPS	REMARKS
B-1	LOCHINVAR	KBN 800	KNIGHT	800	75	115-1-20	MODULATING	
B-2	LOCHINVAR	KBN 800	KNIGHT	800	75	115-1-20	MODULATING	

FAN SCHEDULE

MARK	F-2
TYPE	UPDRAFT
EQUIVALENT TO	GREENHECK
MODEL NO.	CSP
CFM	1425
S.P.	.75
RPM	1535
FAN HP	1/3
ELECTRICAL	115-1-50
SONES	14.8
CONTROL	W/LIGHTS
REMARKS	



EXHAUST FAN DETAIL
NTS
2
M2.1

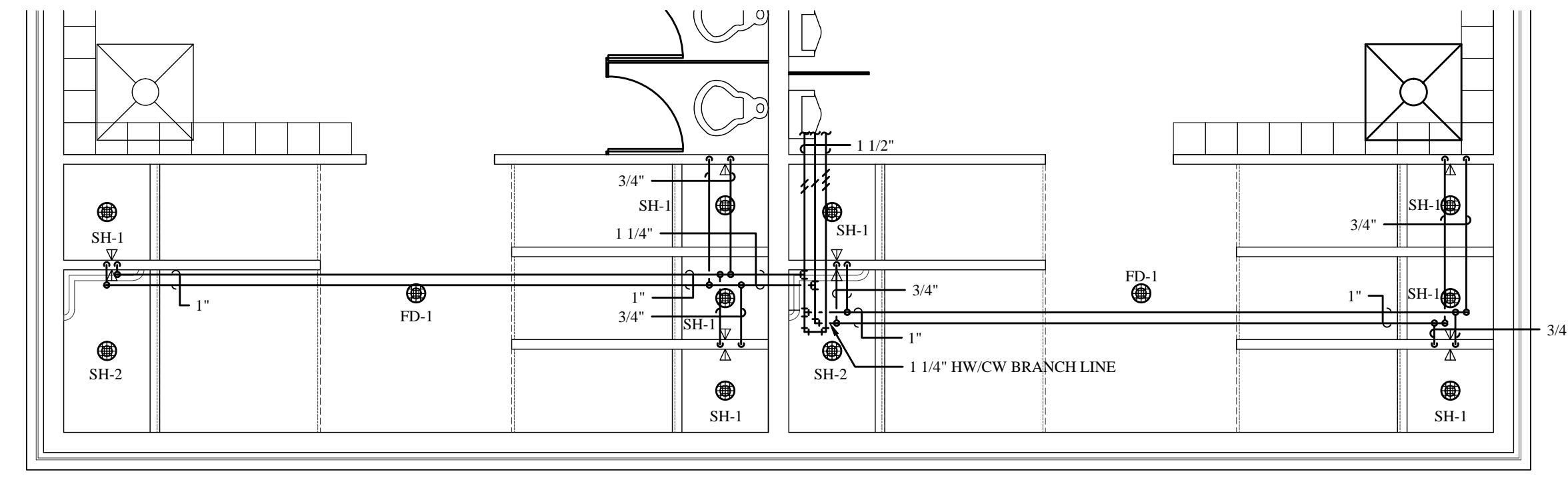
GAS WATER HEATER

MARK	MANUFACTURER	MODEL	FUEL TYPE	MBH INPUT	GALLON	100 DEGREE RECOVERY	ELECTRICAL
WH-2	A.O. SMITH	BTH-250	PROPANE	250	100	276	115/1/60

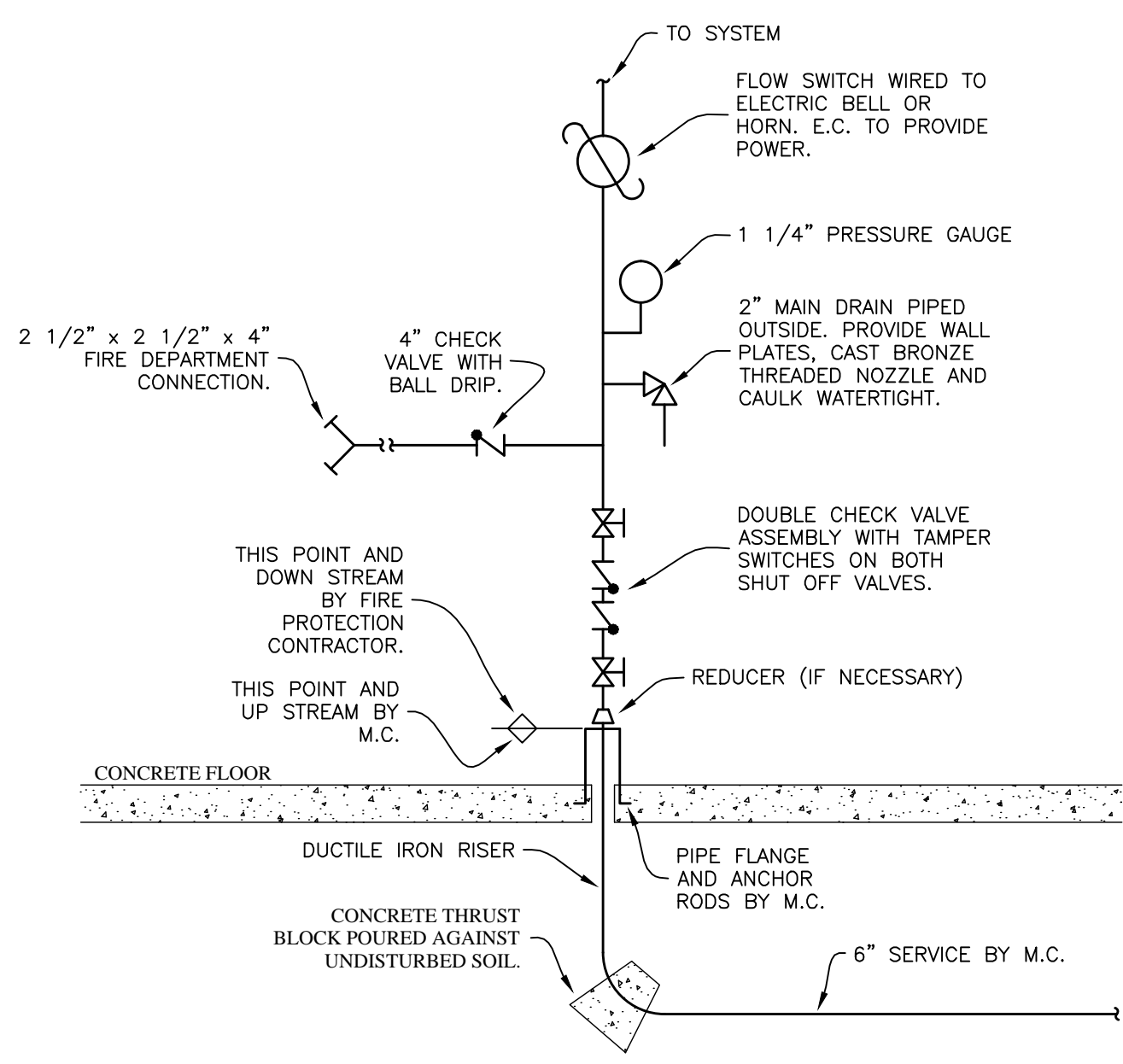
ROOF TOP UNIT

MARK	EQUIVALENT TO	MODEL	ARI TOTAL CAP. (MBt)	HTG. CAP. (MBt)	EER	CFM	E.S.P.	FAN HP	MCA	ELECTRICAL	REFRIGERANT	NOTES
RT-1	AAON	RN-020-3-0	270.00	218.70	12.1	7080	1.50	2@5.0	50	460/3/60	R-410	VFD, MODULATING GAS VALVE

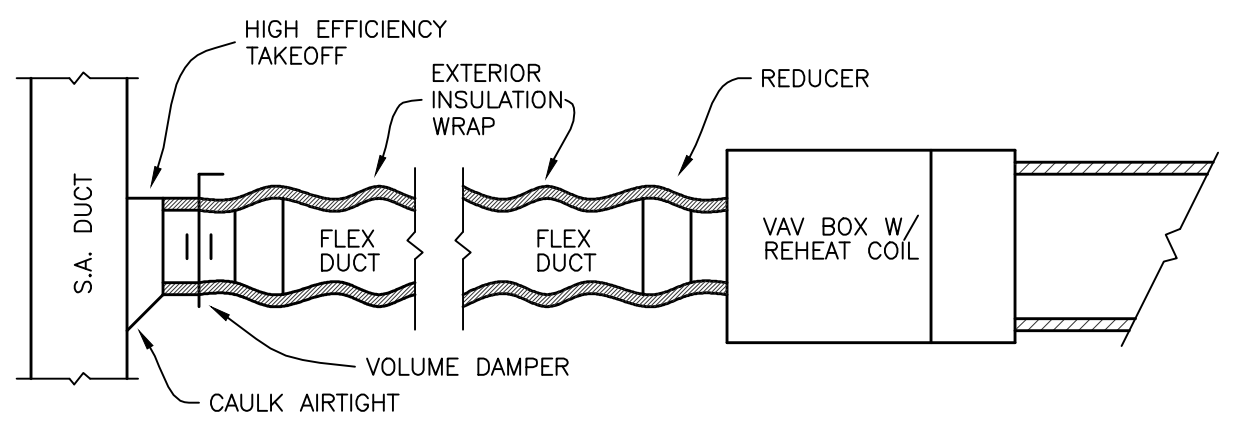
ROOFTOP RT-1 SHALL HAVE FACTORY MOUNTED VFD'S



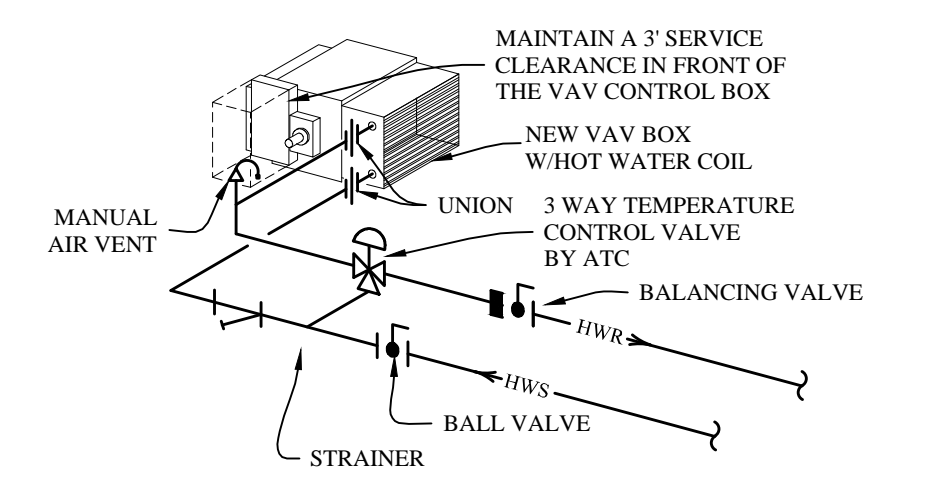
LARGE SCALE SHOWER PIPING PLAN
1/4" = 1'-0"
4
M4.0



FIRE SPRINKLER RISER DETAIL
NTS
3
M2.1



VAV DUCTING DETAIL
NTS
7
M2.1



HOT WATER VAV DETAIL
NTS
6
M2.1

PRELIMINARY PLANS
NOT FOR CONSTRUCTION
9/21/09
PRAIRIE ENGINEERING, P.C.