

- PORTABLE JOIST STANDARD FEATURES:**
- TYPE-304 STAINLESS STEEL CONSTRUCTION
  - 30 FEET OF 1/4" STAINLESS STEEL CABLE
  - STAINLESS STEEL HOOK
  - DUNTON-LAINSON MARINE GRADE BRAKE WINCH
  - ADJUSTABLE REACH IN 1" INCREMENTS
  - STAINLESS STEEL HOOK
  - HALLDAY OR EQUAL
  - MIN. LIFTING CAPACITY 1330 LBS.

**GENERAL NOTES**

1. FLOODED SUCTION STEEL UNDERGROUND SEWAGE PUMP SYSTEM AND 8'x8', PRECAST BOX SECTION WET WELL WITH MONOLITHIC BASE. ALL COMPONENTS MANUFACTURED PER ASTM C478. MANHOLE STRUCTURES SHALL BE WATERTIGHT, O-RING JOINTS PER ASTM C443 OR FLEXIBLE BUTYL RUBBER JOINT SEALANT AS PER MANUFACTURE'S RECOMMENDATIONS. ALL PIPES SHALL BE SEALED WITH LINK SEAL BOLTED SEALS.
2. PUMP STATION PIPING SHALL BE 6" DIA. DIP AND SHALL EXTEND THROUGH THE TOP OF THE PUMP STATION AND THERE CHANGE TO 6" DIA YELONINE FOREMAIN.
3. PUMP STATION AS DRAWN IS BASED ON TWO - 4" VERTICAL FLOODED SUCTION PUMPS. EACH PUMP IS RATED 25hp, 460 VOLTS, 3 PHASE, 60 HERTZ, 1750 RPM TO PRODUCE 350 US gpm AT 110 FEET TDH. THE PUMPS SHALL BE CAPABLE OF HANDLING A 3" SPHERICAL SOLID. FLOATS ARE SHOWN IN THE DRAWING, HOWEVER A BUBBLER SYSTEM IS SPECIFIED FOR LEVEL CONTROL.
4. USE 8'-0" X 10'-0" INSULATED WOOD FRAME STORAGE BUILDING. THE ORIENTATION AND POSITION OF BUILDING IS SHOWN FOR CLARITY. THE ACTUAL LOCATION IN RELATION TO MANHOLES MAY BE DIFFERENT. SEE PLAN SHEETS FOR ACTUAL LOCATION. THE BUILDING SHALL BE WIRED FOR LIGHTING. THE AUX POWER UNIT SHALL BE EXHAUSTED TO THE OUTSIDE AND SHALL HAVE INTAKE AND EXHAUST AUTOMATIC LOUVERS FOR OPERATION. THE CONTROL PANEL FOR THE SEWAGE GRINDER SHALL BE WALL MOUNTED IN THE BUILDING ON A STEEL UNISTRUT FRAME.
5. A SEWAGE GRINDER EQUAL TO A 5 HP CC-12 SEWER CHEWER WITH GRINDER SYSTEM AND AUXILIARY TRASH BASKET SHALL BE MOUNTED IN THE WET WELL.

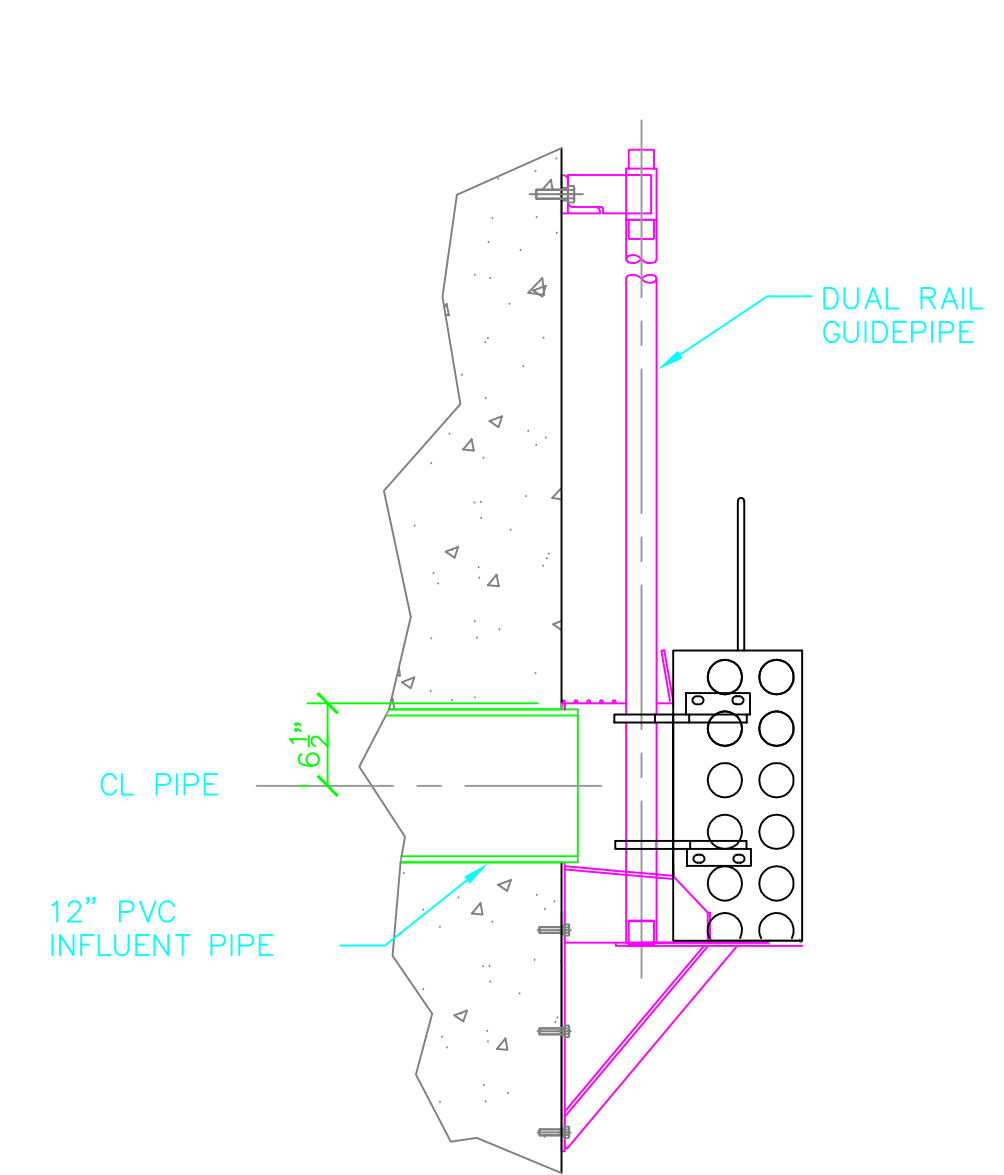
**ALARM FLOAT SWITCH TABLE**

STAGES	BADGER	NO HEART
1 PUMPS OFF	2344.80	2351.50
2 PUMP ON (1)	2345.47	2353.00
3 PUMP ON (2)	2346.15	2353.50
4 HIGH LEVEL ALARM	2346.82	2354.50

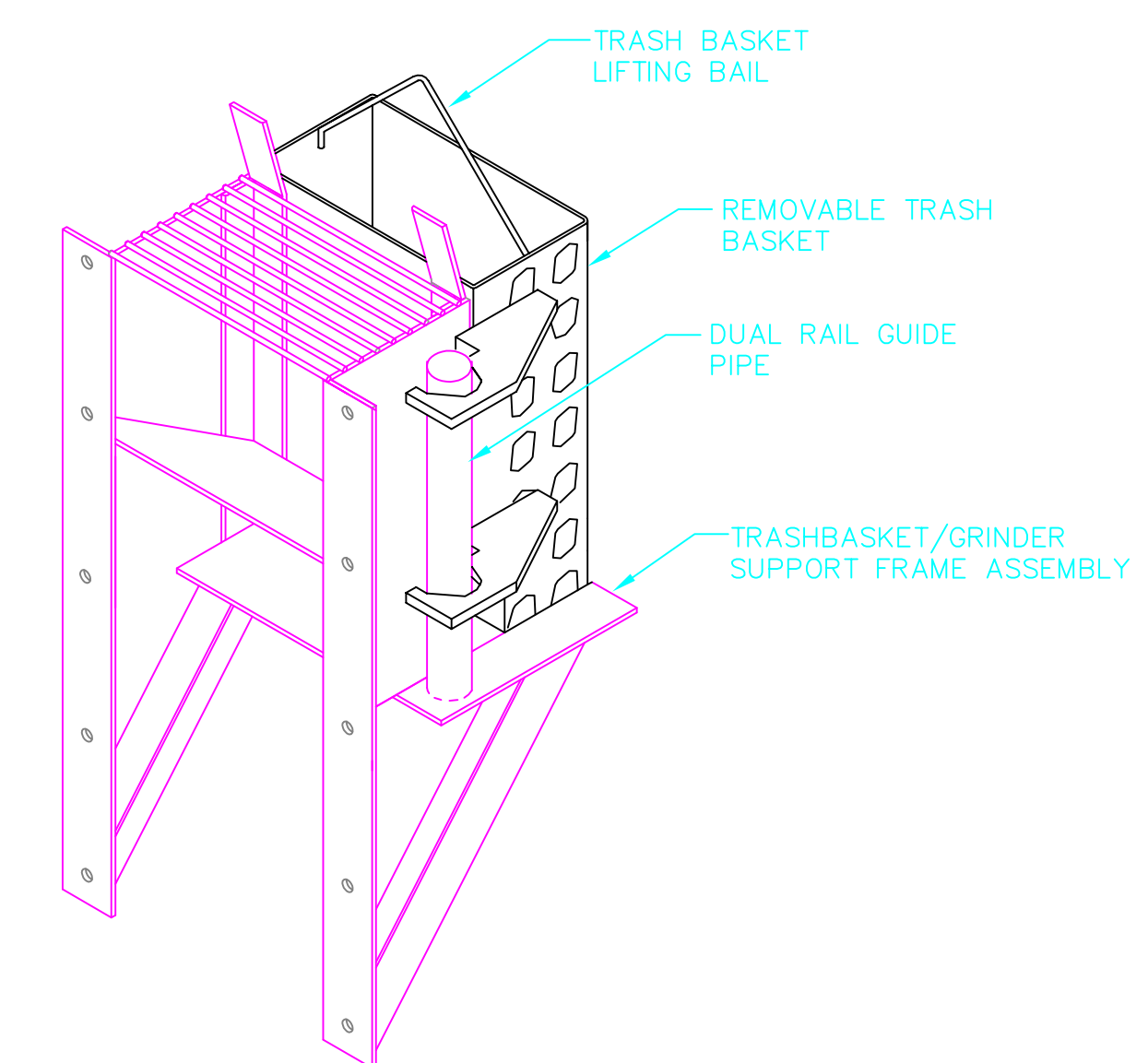
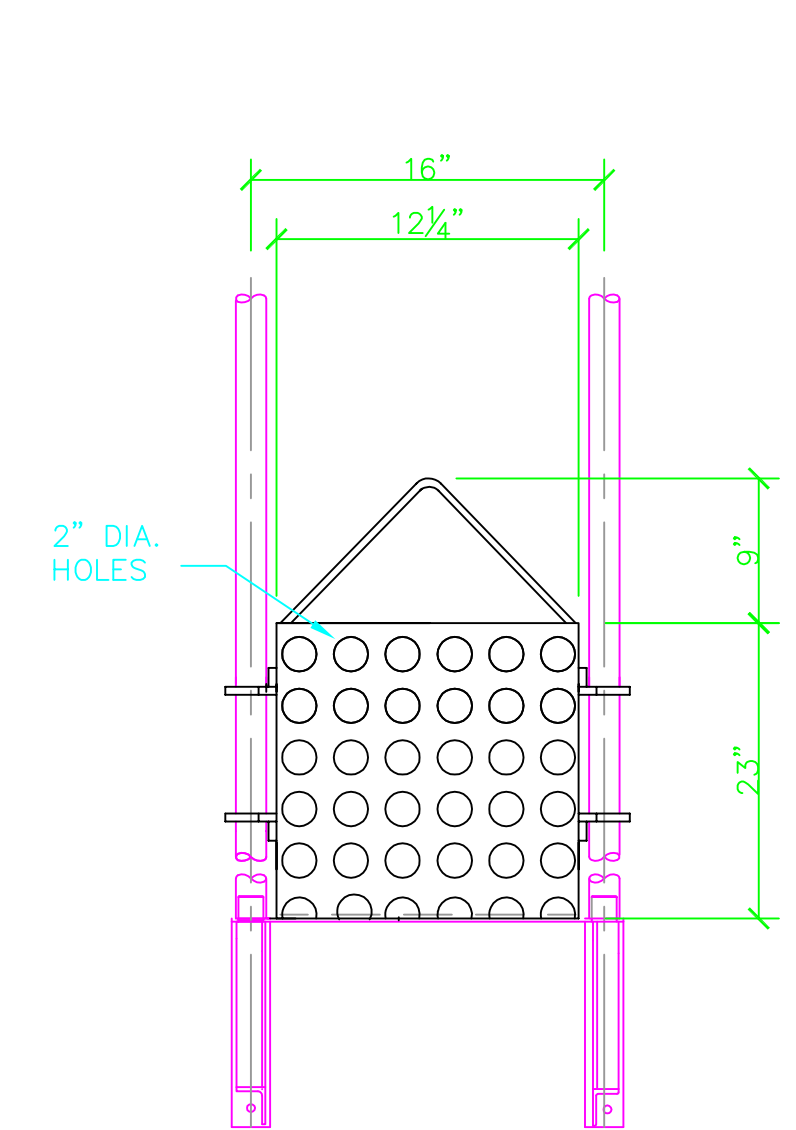
**TABLE OF ELEVATIONS**

DESCRIPTION	BADGER	NO HEART
A CL INFLUENT PIPE	2350.70	2357.80
B TOP WETWELL SLAB	2343.70	2350.80
C TOP WETWELL LID	2357.70	2364.80
D FLOOR LIFT STATION	2343.00	2350.10
D TOP LIFT STA. RISER	2359.70	2366.80

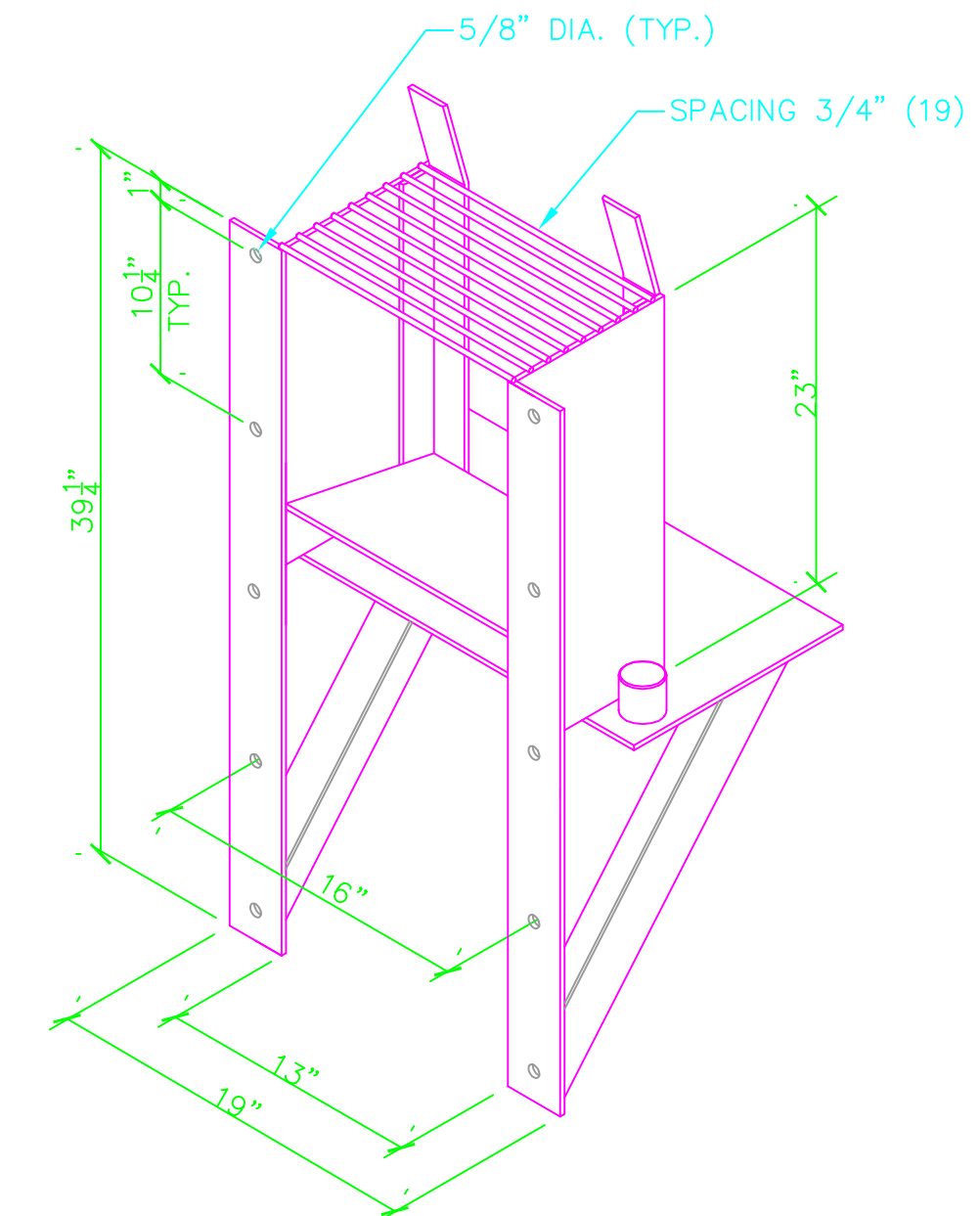
**PRECAST MANHOLE-ELEV.**



**REMOVABLE TRASH BASKET**



**SEWAGE GRINDER BASKET FRAME**



**PSX - POSITIVE SEAL PIPE GASKET**

PROJECT: P0316  
 DATE: 10/27/06  
 DRAWN BY: JWB  
 REVISIONS:

**PROJECT CRHA-031 BADGER SUBDIVISION  
 CHEYENNE RIVER HOUSING AUTHORITY  
 EAGLE BUTTE, SOUTH DAKOTA**

Other Offices:  
 100 South State Ave.  
 Dickinson, ND 58001  
 545 Wyoming Blvd. N.E.  
 Aberdeen, ND 58709

ENGINEERING AND ARCHITECTURE  
 301 West Capitol  
 Pierre, South Dakota 57501  
 Telephone: 605-224-1132

**SHP**

**ELEVATION VIEW  
 WET WELL / DRY WELL  
 SEWAGE LIFT STATION**

SHEET  
**C3.20A**